



2024 ANNUAL REPORT

NEW CHAPTERS IN CONSERVATION



Dear Wildlife Ally,

Here at San Diego Zoo Wildlife Alliance, we always have our eye trained on the future. We look forward to what’s coming next, the milestones ahead, and what more we can do to create a world where all life thrives. This future, which is so full of hope, is made possible only by building on everything we’ve already accomplished together. We are honored to share with you this look at our 108th year. By any measure, it was a tremendous one for the San Diego Zoo, San Diego Zoo Safari Park, and our eight Conservation Hubs around the world.

With you by our side, we continued critical conservation efforts to save, protect, and care for wildlife and the ecosystems we all share. We increased populations of critically endangered species, inspired future generations through new on-grounds experiences, reintroduced wildlife into protected areas of native habitat, and continued to make strides for the long-term preservation of our planet.

As you may know, we also celebrated a particularly exciting milestone. The world joined us in welcoming giant pandas Xin Bao and Yun Chuan to the San Diego Zoo as we continue to secure the future for this vulnerable species. Their arrival marked the next chapter in our powerful 30-year relationship with our Chinese conservation partners. Each and every day, these charismatic bears inspire awe and appreciation in all who experience them.

So as we look back at what made 2024 a banner year, we also look forward: to new partnerships, to new innovations, to new possibilities. Our accomplishments this year will serve as the springboard for global conservation efforts for many years to come.

Thank you for being an integral part of it. Your support is what makes this work possible, and it reminds us of our responsibility to do all we can to create a world where all life thrives. We are deeply grateful for you.

Together for wildlife,

Shawn Dixon
Interim President and Chief Executive Officer

Steven S. Simpson
Chair, Board of Trustees



Table of Contents

- 04** Who We Are
- 06** Vision, Mission, and Values
- 08** Our Two Wildlife Conservation Parks
- 18** Everyday Allies
- 20** Milestone Moments
- 22** Awards
- 24** Pandas Are Back!
- 32** Together for Wildlife: Our Approach
- 34** Wildlife Biodiversity Bank
- 36** Building Alliances to Thrive
- 38** Southwest Conservation Hub
- 44** Pacific Islands Conservation Hub
- 48** Asia Conservation Hub
- 54** African Forest Conservation Hub
- 58** Oceans Conservation Hub
- 64** Amazonia Conservation Hub
- 68** Australian Forest Conservation Hub
- 74** Savanna Conservation Hub
- 80** Education Starts Here
- 84** Our Family
- 90** An Alliance for the World
- 108** Financials
- 110** Ways to Support
- 112** Leadership



Who We Are

San Diego Zoo Wildlife Alliance is an international nonprofit organization with the goal of being the most effective conservation organization for the world.

It all begins with our two front doors, the San Diego Zoo and San Diego Zoo Safari Park, where millions of guests from around the world join us to connect with wildlife every year.

Conservation is at the heart of everything we do, and it begins with those connections we make between people and nature every day. **Our two wildlife parks make our mission, conservation work, and partnerships possible.**

With more than 100 years of expertise, we integrate wildlife health and care, science, and education to develop sustainable conservation strategies at home and across the globe. As an Alliance, we partner with allies in eight strategic regions worldwide, known as our Conservation Hubs.

By uniting our strengths, knowledge, and resources, we have a greater impact as we work together to safeguard the future of the planet, its wildlife, and the spaces we all share. Because when wildlife thrives, all life thrives.





Our Vision

A World Where All Life Thrives

Our Mission

San Diego Zoo Wildlife Alliance is committed to saving species worldwide by uniting our expertise in wildlife care and conservation science with our dedication to inspiring passion for nature.

Our Values

Collaborate

We nurture alliances with diverse teams, peers, partners, and communities to expand and deepen our impact.

Innovate

Together we pioneer new ideas and approaches to ensure the long-term health and survival of wildlife.

Inspire

We share our passion for nature to increase understanding, empathy, advocacy, and action for wildlife.

Thrive

When we collaborate, innovate, and inspire, we help people and wildlife thrive together for a healthy planet.

Our Logo

Our logo represents over a century of achievement and San Diego Zoo Wildlife Alliance's future as a force for conservation.



The Rhino

Represents the icon of our no place like it on Earth Safari Park.



The Lion

Represents the founding of the world-famous Zoo more than a century ago.



The Bird

Represents our groundbreaking historical and ongoing conservation efforts.



Our Two Wildlife Conservation Parks

The San Diego Zoo and San Diego Zoo Safari Park are our two front doors. Here we welcome guests and foster connections with wildlife, fueling our mission and allowing us to invest alongside our allies and partners in our vision of a world where all life thrives.

Our Responsibility

With over a century of experience, we've honed a unique set of skills and strengths that has become a significant contributor to vital global conservation efforts. The privilege of working with wildlife at each stage in life and gaining a deeper

understanding of each plant or animal's biology comes with the responsibility of using those insights to secure the future for wildlife, people, and the planet—and to inspire others to join us.

We care for more than 15,000 animals and over 2 million plants at the Zoo and Safari Park.



IT ALL BEGAN WITH A ROAR

when our world-famous Zoo was founded to foster connections between people and wildlife.

Each year, **over 4 million guests** join us to make lasting memories and connect with wildlife. Across 100 acres in the heart of Balboa Park in downtown San Diego, allies of all ages learn about animals, plants, conservation, and the ecosystems we share through inspiring and educational experiences.

Encounter Wildlife

We care for **more than 12,000** unique and endangered animals representing **over 680** species. From giant pandas exploring bamboo forests at Panda Ridge to orangutans swinging through the treetops, new discoveries await around every corner.

New Perspectives

Stroll through buzzing aviaries and forests with trickling streams, and experience bird's-eye views from Bashor Bridge, Skyfari, and our signature double-decker buses. Wherever the journey takes our guests, new ways to connect with nature are everywhere they look.

Botanical Wonders

The Zoo is an accredited botanical garden. Its lush grounds and naturalistic habitats offer acres of awe-inspiring flora to explore, and countless guests have discovered its wonders during Plant Days activities and tours.

Snack and Dine

From quick bites, sips, and treats to a full-service restaurant, the Zoo boasts **30 diverse dining locations** with tasty options for everyone.

Explore Ecosystems

Guests can roam from savanna to seashore, explore the wonders of the Land Down Under, hike through Asian bamboo forests, and so much more. With each new step to every diverse habitat, visitors are **immersed in biodiversity** from across the globe.

Inspiring Exploration

At Denny Sanford Wildlife Explorers Basecamp, the next generation of conservationists and caretakers of our planet **learn about nature and encounter new worlds** while they climb, jump, and play alongside wildlife.

Discovery Awaits

Engaging experiences bring allies closer to wildlife than ever before.

- Inside Look tours
- Wildlife encounters and experiences
- Exclusive VIP Experiences
- Plant Days and Orchid Odyssey
- Seasonal events, including Ha!GLOWeen, Jungle Bells, and Food, Wine & Brew



Where Conservation Begins

The Zoo is home to a renowned veterinary hospital and museum-accredited pathology archives. At the Scripps Building, our Disease Investigations team works to address wildlife disease and performs health surveillance, and our Wildlife Nutrition and Curatorial teams collaborate to provide world-class care.

Growing and Thriving

In addition to caring for **more than 700,000 individual plants of more than 3,100 species**, the Zoo serves as a haven for endangered and illegally trafficked plants. The Zoo and Safari Park have both earned Level IV accreditation as an arboretum—the highest rank awarded by ArbNet.

Wildlife Explorers Basecamp



Bus Tours



Explore Ecosystems



Encounter Wildlife



Skyfari®





San Diego Zoo
**Safari
Park**

THERE'S NO PLACE LIKE IT ON **EARTH**

Immersive, authentic, adventure-oriented experiences spread across 1,800 acres in Escondido, California, offer guests the opportunity to connect with extraordinary wildlife and ecosystems—from the Australian outback and rainforests of Indonesia to the vast grasslands of Africa. Life-changing moments happen here every day, inspiring **1.5 million allies** who visit us each year to join our efforts to save, protect, and care for wildlife worldwide.

Worlds of Wildlife Wonders

We care for **more than 3,100** animals representing **over 340** species, offering endless opportunities to connect with the world's wildlife, from tigers prowling bamboo forests to gorillas interacting across leafy glades and platypuses swimming through bubbling streams.

Explore the Savanna

Our Africa Tram, inspired by the legendary safari trains of Africa, takes guests on a **guided 2.5-mile adventure** around expansive savanna habitats to experience towers of giraffes, crashes of rhinos, flocks of rare birds, and so much more.

Fuel Your Adventures

There's something delicious for everyone at our **17 dining and snacking locations**, from tasty bites to full-service meals and delectable seasonal offerings.

Playful Destinations

Interactive areas, including Mawazo Woods Discovery Area, Conservation Carousel, and Camp Play Area at Tiger Trail, engage our youngest allies with wild fun.

Garden Strolls

With **more than 1.3 million** plants of **over 3,700** species, our accredited botanical gardens offer a chance to visit habitats from around the globe, from the Baja and Old World Succulent Gardens to the California Nativescapes Garden. On weekends, guests can take a deeper dive into Safari Park flora on a free Africa Tram Botanical Tour.

Elephant Valley

With your support, we're transforming the heart of the Safari Park with the reimagining of Denny Sanford Elephant Valley—a dynamic new experience for our elephant family and a one-of-a-kind place where you can roam alongside these gentle giants.

Arnold and Mabel Beckman Center for Conservation Research

This **home base for innovation**—and our Conservation Science and Wildlife Health teams—also houses our library, laboratories, Wildlife Biodiversity Bank, Conservation Education Lab, and The Eddy Family Outdoor Learning Lab.

Adventure Awaits

Guests enjoy a range of thrilling, educational, and adventure-oriented experiences.

- Wildlife and Safari Experiences
- Zip lining on Flightline Safari
- Roar & Snore overnight camping
- Ultimate Safari
- Wildlife encounters
- Balloon Safari
- Seasonal adventures, including Butterfly Jungle, Autumn Festival, and Wild Holidays



Where Conservation Begins

Founded as one of the boldest preservation projects in history, the Safari Park continues to lead the way for conservation. Programs to save and protect California condors, western burrowing owls, rhinos, and other endangered species are headquartered here, along with the state-of-the-art Paul Harter Veterinary Medical Center.



Biodiversity Reserve

This protected area of vital, native coastal sage scrub habitat **makes up nearly 1,000** of the Safari Park's 1,800 acres.



Paul Harter Veterinary Medical Center



Fuel Your Adventures



Wild Holidays



Explore the Savanna



Balloon Safari



Roar & Snore Overnight Camping

Everyday Allies

People Make It All Possible

Behind Our Two Front Doors

More than **5.5 million guests** join us to connect with wildlife at the Zoo and Safari Park each year. Every single one of those visits, the lifelong memories they create, and the positive impact they make for wildlife across the globe is **only possible because of thousands of team members and volunteers making it happen** each and every day.

“I am in awe of what the teams do behind the scenes to maintain the daily operations of the Safari Park. **It is truly impressive how deeply every team cares, and how involved they are.**”

—**MATT F.**
Maintenance, Safari Park



Onward 2024

IN MAY, WE CAME TOGETHER FOR ONWARD, our third annual organization-wide meeting. We heard from leadership, conservation partners, and Wildlife Care teams, who provided insights into our work and a look at what's on the horizon.



3,000+

DEDICATED TEAM MEMBERS
worked to fulfill San Diego Zoo Wildlife Alliance's mission in San Diego and across the globe in 2024.



2,019

INVALUABLE VOLUNTEERS
work alongside our teams. They share their passion for conservation with guests of all ages, lend diverse skills and expertise behind the scenes, and are making a difference for our mission.



334,713+

HOURS OF SERVICE
contributed by our volunteers.



804,000+

BROWSE ITEMS
including shoots, bark, buds, leaves, and other edible plant material were farmed, serving **more than 255 animals**, from insects to elephants.

We're grateful to
Carol Ann Greenfield
and **Larry David Greenfield, M.D.**
for their support of
wildlife nutrition.

2024 Milestone Moments

From inspirational stories at the Zoo and Safari Park to noteworthy conservation achievements and global media reach, here are some of the **moments that made our year**.

125 million+

visits to our website from people across the globe.

1st North American porcupine to give birth by C-section.

250th

endangered California condor chick hatched at the Safari Park (page 41).

11,420th

living cell line banked in the Wildlife Biodiversity Bank's Frozen Zoo® (page 34).

400,000

members call the Zoo and Safari Park their home away from home—**one of the largest membership bases** of any zoo in the world (see page 110 for how you can join us).

27,000+

donors provided generous support for our mission, supporting wildlife in San Diego and across the globe.

2 giant pandas

Xin Bao and Yun Chuan, arrived at the Zoo to kick off **a new era of conservation** and won the hearts of countless admirers when Panda Ridge opened on August 8 (page 24).

423 billion+

media impressions worldwide—a **286% increase**—reaching more allies than ever before.

Fewer than 50 Worldwide

The Zoo and Safari Park were recognized for our conservation work, achieving the **highest level of arboretum accreditation** (page 12).

Number 1

We're **the largest provider** of informal STEM education in San Diego County (page 80).

315,000

learners joined us for one-of-a-kind educational programming (page 80).

5.5 million

guests came to the Zoo and Safari Park to experience life-changing moments with wildlife.

2,088

campers participated in Summer Camp at the San Diego Zoo—and collectively immersed themselves in **62,640** hours of fun and learning.

54 million+

webcam views connected allies across the globe with wildlife.

2024 Awards

We received **global recognition** for everything from our conservation work and on-grounds experiences to our podcast and books.

Fast Company World Changing Ideas 2024

We and our partners were honorees in the Nature category for **pioneering new technology** to assess the health of endangered killer whales in the Salish Sea (see page 62).

Collected under NMFS Permit #27052

Medallion-Winning Books

San Diego Zoo Wildlife Alliance Press received two Benjamin Franklin Awards from the Independent Book Publishers Association.

Top Honors at the Rose Parade

We won the Sweepstakes Award for our 2024 Rose Parade float, “It Began with a Roar,” engaging **more than 50 million viewers** worldwide (see page 101).

Diamond Honors

The San Diego Association of Governments named us to the Bronze tier in its Diamond Awards, recognizing our efforts toward sustainability, improving regional commuting, and reducing emissions.

Employer of Choice

Forbes named us as one of America’s Best Midsize Employers 2024.



Awarding Leadership

Paul A. Baribault

2024 CEO Pinnacle Award/Not-for-Profit
Chief Executives Council

CEO/World Leader of the Year: Silver
Globee

Shawn Dixon

Chief Operating Officer of the Year: Gold
Globee

2024 COO of the Year/Not-for-Profit
Operations Council

David Franco

Chief Financial Officer of the Year: Gold
Globee

David Miller

Chief Marketing Officer of the Year: Gold
Globee

San Diego Business Journal recognized **Rolf Benirschke** and **Steve Simpson** as Nonprofit Board Members of Influence, **Erika Kohler** received Nonprofit Business Women of the Year honors, and **Dr. Nadine Lamberski** was named a Life Sciences Leader of Influence.



Honors for Amazing Wildlife

The third season of *Amazing Wildlife: A San Diego Zoo Podcast* received two Signal Awards, recognizing today’s most meaningful audio projects that define culture.



A Workplace for Innovators

We were named one of *Fast Company*’s Top 10 Most Innovative Companies in the not-for-profit category, and honored as one of 100 Best Workplaces for Innovators in the U.S.



Kudos for Weddings

Our Wild Weddings received Best of Weddings honors from The Knot and also won the Couples’ Choice Award from WeddingWire.



Coin of Excellence

This first-ever award presented by the U.S. Fish and Wildlife Service’s forensic laboratory recognizes our 30+ years of support for investigations of wildlife trafficking and poaching.



Excellence in Journalism

Teams won first place in 10 categories in the 2024 San Diego Press Club Excellence in Journalism Awards, recognizing our websites, conservation newsletters, magazine writing, and illustration.

Pandas Are Back!

The first giant pandas to come to the U.S. in 21 years—Xin Bao and Yun Chuan—arrived at the Zoo this summer, kicking off a new era of collaborative conservation work with our partners in China.

Together we will address vital issues of panda health and well-being, preparing giant pandas for future translocations to native habitats, developing new and emerging technologies for conservation strategies, and sharing insights to conserve giant pandas and their fragile ecosystems. While pandas are the focus of this work, it will also positively impact other species sharing their bamboo forest ecosystems.

Pandas have an extraordinary ability to unite us all. The life-changing connections made every day at the Zoo bring the power of conservation to life and inspire allies from around the world to join us in our mission.



30 YEARS OF PANDA MILESTONES

For 30 years, we've had the honor of working alongside our Chinese conservation partners to make a difference for giant pandas, transforming conservation—and the future—for this once-endangered species.

Our collaborative efforts began with the arrival of pandas at the San Diego Zoo, making possible scientific research that helped increase panda numbers and support China's ongoing restoration of native habitats and wildlife translocations. This work continues today as we help pandas thrive in a changing world. This partnership has united the world to achieve a shared conservation goal and is a powerful example of how, when we work together, we can achieve what once seemed impossible.



<p>1995</p> <p>Our long-standing collaborative partnership with China Wildlife Conservation Association (CWCA) begins. Initially, our work together is focused on improving giant panda conservation breeding outcomes.</p>	<p>1996</p> <p>As part of this historic collaboration, female panda Bai Yun and male Shi Shi arrive in San Diego, and guests fall in love.</p>	<p>1999</p> <p>Hua Mei is born to Bai Yun and Shi Shi through artificial insemination, and is the first giant panda cub to be born, survive, and thrive in the U.S.</p>	<p>2003</p> <p>Male panda Gao Gao arrives in San Diego. Later that year, the world's first ultrasound voluntarily participated in by a giant panda confirms Bai Yun is pregnant.</p> <p>Mei Sheng is the first cub born to Bai Yun and Gao Gao, and four more follow: Su Lin in 2005, Zhen Zhen (future mother of Yun Chuan) in 2007, Yun Zi in 2009, and Xiao Liwu in 2012.</p>	<p>2006</p> <p>Research on panda habitat needs begins with the Chinese Academy of Sciences.</p>	<p>2013</p> <p>Courtship studies on mate choice begin.</p>	<p>2016</p> <p>As populations begin to recover, the International Union for Conservation of Nature (IUCN) reclassifies giant pandas from Endangered to Vulnerable.</p>	<p>2019</p> <p>At the conclusion of the first phase of our conservation collaboration, giant pandas in San Diego return to China.</p>	<p>2021</p> <p>Zhen Zhen welcomes twins in China—and one is Yun Chuan.</p>	<p>2023</p> <p>NOVEMBER Chinese President Xi Jinping expresses hopes that China will once again send pandas to the U.S., saying “I was told that many American people, especially children, were really reluctant to say goodbye to the pandas, and went to the zoo to see them off. I also learned that the San Diego Zoo and the Californians very much look forward to welcoming pandas back.”</p>	<p>DECEMBER San Diego Zoo Wildlife Alliance team members travel to China to meet with our longtime partners in giant panda conservation.</p>	<p>2024</p> <p>FEBRUARY San Diego Zoo Wildlife Alliance signs a cooperative agreement with CWCA and files a permit application with the U.S. Fish and Wildlife Service—a critical step toward welcoming pandas back.</p>	<p>JUNE San Diego Mayor Todd Gloria joins us in China to attend a farewell ceremony for Xin Bao and Yun Chuan.</p> <p>Yun Chuan and Xin Bao—the first pandas to come to the U.S. in 21 years—arrive at the Zoo for an acclimation period.</p>	<p>SUMMER As worldwide excitement about the pandas' arrival ensues, we are suddenly in the news—everywhere.</p>
--	--	---	--	--	---	---	--	---	--	--	--	---	--

MEDIA MOMENTS

AUGUST 8, 2024

Panda Ridge opens, and California Governor Gavin Newsom officially declares the date “California Panda Day.” Governor Newsom and First Partner Jennifer Siebel Newsom enjoyed a first look at the new Panda Ridge habitats with San Diego Zoo Wildlife Alliance President and Chief Executive Officer Paul A. Baribault.



San Diego Mayor Todd Gloria on NBC 7 San Diego, local broadcast



Paul Baribault on ABC News, national broadcast



Megan Owen, Ph.D., on NBC's Today, national broadcast



San Diego Zoo Wildlife Alliance Board of Trustees, Paul Baribault, Governor Gavin Newsom, and Ambassador Xie Feng



Participants in the opening ceremony included (above, from left) members of our community; California Senate President pro Tempore Emeritus Toni G. Atkins; California Governor Gavin Newsom; Chinese Ambassador to the United States Xie Feng; San Diego Zoo Wildlife Alliance President and Chief Executive Officer Paul A. Baribault; China Wildlife Conservation Association Deputy Secretary General Si Ping; and San Diego Mayor Todd Gloria. Special guests included other U.S. and Chinese dignitaries and civic leaders and artist Shepard Fairey (bottom right), who unveiled original artwork created to celebrate the event.



Ambassador Xie Feng



San Diego Mayor Todd Gloria



Paul Baribault, Governor Gavin Newsom, Ambassador Xie Feng, Madame Wang Dan, Consul General Guo Shaochun, and Madame Wang Wei



Shepard Fairey

Welcome to Panda Ridge

The eagerly anticipated opening of the new Panda Ridge habitats was one of the biggest days in San Diego Zoo history. As thousands of guests flocked to Panda Ridge to welcome Xin Bao and Yun Chuan, media from around the world broadcast news of the day's highlights to millions of viewers.

Panda Ridge's immersive new habitats include iconic features from mountainous bamboo forests of China, trees and hillsides for climbing, pools, and lush vegetation—and are more than four times larger than the previous space.

We are honored to share this extraordinary opportunity to gain a deeper understanding of giant pandas and the importance of protecting them as we embark on a new era of giant panda conservation. Panda Ridge shares their conservation story, offering unparalleled opportunities to enter their world and create lifelong connections with these charismatic and beloved bears.



鑫宝
XIN BAO



We thank Kenneth C. Griffin, Peng Zhao, and Pandas International for their cornerstone gifts to Panda Ridge.



Together for Wildlife

Our Approach

One Health

We are all interconnected. The health of wildlife, people, and the ecosystems we share are inextricably linked—and determine the health of our planet. Through a holistic One Health approach, we honor, celebrate, and advocate for that connection every day.

A Vital Balance

Biodiversity loss, climate change, and global pandemics are severe and interconnected crises that cannot be addressed in isolation. Habitat degradation, invasive species, the illegal wildlife trade, pollution, and challenges to human-wildlife coexistence drive these crises and impact all of us. We work with partner organizations and allies around the world to address these complex issues so all life can thrive.

PEOPLE

WILDLIFE

One
Health

ECOSYSTEMS



Sustainable Conservation Solutions

Our approach to protecting and restoring wildlife and habitats is collaborative, innovative, and multidisciplinary. Working together with local communities and global partners, we apply the following skills and expertise to address pressing threats to conservation. We use inclusive, comprehensive, and evidence-based solutions to address immediate and root causes of the loss of biodiversity, empowering those who live alongside wildlife to be stewards of nature.



Skills & Expertise

- Applied Social Science
- Assisted Reproductive Technologies
- Biodiversity Banking
- Capacity Enhancement
- Conservation Breeding
- Conservation Education
- Conservation Technologies
- Conservation Translocation
- Diagnostic Techniques
- Disease Investigation & Response
- Ecological Applications & Monitoring
- Genetic Rescue
- Plant Conservation
- Wildlife Care
- Wildlife Nutrition
- Veterinary Care

WILDLIFE BIODIVERSITY BANK

Our Wildlife Biodiversity Bank is the umbrella term for all the biological materials—living and nonliving—preserved by our teams. Our efforts began in 1975 with the founding of our Frozen Zoo, and today it's the most extensive resource of its kind in the world.

Biobanks like ours lay the foundation for trailblazing conservation solutions by bridging today's samples with tomorrow's scientific potential.

IN FOCUS

Cells—like this plant cell, and the 11,420 individual cell lines banked in our Frozen Zoo—are building blocks of life.

IN 2024:



We banked the first plant—endangered Nuttall's scrub oak—in the Frozen Zoo. This **groundbreaking rare plant cryopreservation** work will continue over the next three years, thanks to a National Leadership Grant from the Institute of Museum and Library Services.



199 species and subspecies were added to the Frozen Zoo, including sunflower sea stars, whooping cranes, and gray whales; **34** are species that are new to the collection.



751 vials of gametes and reproductive tissue were frozen.

Our subcollections total millions of samples—diverse in both type and taxa.

Nearly **51,000** samples of genetic materials, including blood, tissue, DNA, and cells

Gametes from **2,373** individuals representing **473** species

67 million+ seeds representing more than **523** types of plants

Slides of tissue sections from **1,867+** species, dating back to the 1930s

11,420 individual cell lines representing about **1,330** species and subspecies

Together with the International Union for Conservation of Nature (IUCN), we've formed the first **Center for Species Survival: Biodiversity Biobanking**, representing our enduring commitment to save species in the face of increasing biodiversity loss.

FROZEN ZOO

Gametes (sperm and eggs), embryos, and living fibroblast (skin) cell lines

WILDLIFE ARTIFACTS

Skeletal replicas and items naturally shed or lost (for example, feathers and leaves)

NATIVE PLANT GENE BANK

Seeds, plant cuttings, and herbarium vouchers (pressed and dried specimens)

TISSUE AND DNA BANK

Blood, tissues, DNA, and cells

CLINICAL REPOSITORY

Bodily fluids and blood components (plasma and serum)

PATHOLOGY ARCHIVE

Tissues, microbes, DNA, and RNA

Our work begins in San Diego **and spans the globe.**

Building Alliances to Thrive

Much of our conservation work takes place in biodiversity hotspots, the most biologically rich—and threatened—regions on the planet.

Conservation begins with people, and a world where all life thrives is only possible when local communities, governments, conservation organizations, allies like you, and wildlife explorers of all ages work together.

Our eight Conservation Hubs are the places we're currently most invested, and where we can use our century of wildlife expertise to build on existing collaborations with internal and external partners and drive strategic outcomes: healthy wildlife populations, flourishing communities, and connected and resilient landscapes.

You are our most important ally.

Every time you visit, make a donation, purchase an item from us, or share what you know about animals, plants, and conservation, you're playing a role in achieving our mission and securing the future for wildlife.

See page 92 for a list of partners, and page 110 for more about how you can join us.

SOUTHWEST

Conservation Hub

The Southwest—a cross-border area spanning the southwestern United States and northern Mexico—extends from coast to desert and incorporates diverse landscapes, including wetlands, forests, grasslands, and mountains. In the heart of this region is San Diego County, home to our headquarters and more imperiled wildlife than anywhere else in the continental United States.

We collaborate to safeguard and celebrate local wildlife and the ecosystems we share. We make conservation impacts across the Southwest by boosting populations and reintroducing threatened species; identifying and reducing threats to ecosystems; and using cutting-edge science and technology to monitor and protect wildlife and native habitats.





Protected Spaces

This year, the Biodiversity Reserve and Descanso Ranchland were designated as protected areas by 30x30 California, an effort to protect 30 percent of California’s lands and coastal waters by 2030.



30x30 California is part of a national and global movement to protect waterways and ecosystems.



Insights on Invasive Vegetation

We completed a large-scale vegetation study to address stinknet plant growth after wildfires, determining the most effective methods for controlling this invasive species.



CONSERVATION in Our Backyard

We protect native landscapes while caring for and increasing populations of desert tortoises, burrowing owls, mountain yellow-legged frogs, California condors, and other species.

Half of the Safari Park’s 1,800 acres are set aside as the Biodiversity Reserve, one of the last remaining expanses of native coastal sage scrub and chaparral habitat in the region. Our scientists work here and in a similar protected area, the Descanso Ranchland, to increase understanding of how wildlife use the landscape and study new methods to foster coexistence with mountain lions and other local wildlife.

“The San Diego Zoo Wildlife Alliance team excels in the pursuit of innovation and outreach while **leading essential conservation projects throughout the West.**

I am perpetually impressed by the quality of science practiced, the loving and humane treatment of avifauna, and the highly experienced and motivated staff.

—GALEN R.
*Conservation Habitat Manager,
San Diego Habitat Conservancy*



Wild Weekend: Southwest

This fun-filled event at the Safari Park connected guests with the unique wildlife of the Southwest and our ongoing efforts to secure their future.



The Cedros Island oak is one of six focal species in our efforts to conserve Southwestern oaks.

Rescuing a Special Tree

Teams worked with partners to rescue a dying Cedros Island oak uprooted in a landslide and replanted it at the Zoo.

This threatened species is only found on Otay Mountain in Southern California; in a few locations in Baja California, Mexico; and in seven botanic gardens worldwide.



A Momentous Hatch

In April, we celebrated Emaay, the **250th California condor to hatch** at the Safari Park. More than 40 years after the California condor population dropped to a low of just 22 birds, this is a significant milestone.

Emaay’s parents are Mexwe and Xol-Xol—the first California condor brought into human care for the California Condor Recovery Program in 1982.



Today the California condor population numbers more than 560 birds.

Boosting Wildlife Populations

Conservation breeding programs for threatened and endangered wildlife increase populations, prepare them for success in new landscapes, and introduce them into native habitats where they can thrive.



34

Mojave Desert Tortoises went to kindergarten. An unused kindergarten classroom at Edwards Air Force Base became a temporary safe haven for young, endangered tortoises when an outbreak of fire ants posed a threat.



184

Mountain Yellow-Legged Frogs reared at the Safari Park were introduced into the San Jacinto mountains, helping restore sustainable populations of this endangered species.



We're helping reduce the frogs' vulnerability to potentially deadly chytrid fungus through prerelease "immunity priming" and application of a custom skin probiotic.



7

Native Bats were rescued, rehabilitated by our partners, and successfully reintroduced into native habitat at the Safari Park, marking the first reintroduction of native bats here.



The Safari Park is a hotspot for 17 species of native bats. We set up 12 bat houses to provide safe roosting locations, while acoustic monitoring and trail cameras are helping us better understand and coexist with these local species.



50

Pacific Pocket Mice were introduced into native coastal habitat at Marine Corps Base Camp Pendleton to establish a thriving new population of this endangered species, which was once thought to be extinct.



7

Light-Footed Ridgway's Rails were successfully introduced into native wetlands at Naval Base Ventura County Point Mugu in collaboration with our partners.



Three of these endangered birds were hatched at the Safari Park. Only about 266 pairs remain in their native habitats.

PACIFIC ISLANDS

Conservation Hub



The Pacific Islands are home to an abundance of wildlife found nowhere else on Earth. Incredible biodiversity abounds from coastal reefs to mountain ridges and includes some of the rarest birds and reptiles, along with unique habitats. But despite their remote locations, these islands are highly vulnerable to invasive species and diseases, habitat fragmentation, wildfires, and the effects of climate change.

With initiatives in Hawai'i, Fiji, Palau, the Channel Islands, and on the island of Rota, we collaborate with partners and local communities to recover threatened species, safeguard wildlife and ecosystems, and establish sustainable solutions to preserve biodiversity.



STRATEGIES to Help Threatened Wildlife

At our Maui Bird Conservation Center (MBCC) and Keauhou Bird Conservation Center (KBCC), teams work with local communities to help restore Hawai'i's endangered native bird populations.

Teams caring for critically endangered aga (Mariana crows) on the western Pacific Island of Rota and San Clemente Island loggerhead shrikes off the coast of Southern California employ techniques that help ensure young birds are past their most vulnerable period and can thrive when reintroduced into native habitats.

Honoring Heroic Action

Jennifer Pribble, MBCC wildlife care supervisor, was honored—along with two dozen firefighters—by the U.S. Department of the Interior for **her efforts to keep the devastating Maui wildfires from reaching nearly 100 critically endangered Hawaiian birds** cared for at the MBCC.



Recovery from the Brink of Extinction

Five 'alalā, a critically endangered corvid species also known as Hawaiian crow, were released on Maui—a **historic first on the island and a crucial milestone** in reestablishing a population declared extinct in the wild in 2002.

22 Critically Endangered Aga

were reintroduced in 2024, marking **more than 80** total releases over the program's six seasons.

Every 1 Counts

For the first time in the 30-year history of the program, our San Clemente loggerhead shrike team needed to assist a hatching chick that was positioned improperly in the egg and unable to break out on its own.



After fledging, the juvenile chick was reintroduced into native habitat with others hatched this year.



Safeguarding Native Palms

Loulu palms—the only palm trees native to Hawai'i—are endangered, with populations rapidly declining due to the invasive coconut rhinoceros beetle. The San Diego Zoo is now serving as a safe site to increase the population and protect genetic diversity.

Over the next 5 years, we will be growing 160 individual loulu palms in San Diego that may one day help replenish the native population.

Community Power

Team members work with local communities in Palau to help support the preservation and propagation of native orchids and cycads at risk due to climate change and urban development.

“San Diego Zoo Wildlife Alliance has been an unparalleled partner for the Navy's efforts toward recovery of the critically endangered San Clemente loggerhead shrike. Thanks to the Alliance's **commitment to species recovery and innovation**, in 2024 we were able to release a near-record level of juvenile shrikes to bolster the wild population.

—MELISSA B.

San Clemente Island Senior Natural Resources Specialist
and Natural Resources Manager

ASIA

Conservation Hub

Asia is home to nearly 15 percent of the world's tropical forests, including multiple biodiversity hotspots and an abundance of wildlife found nowhere else on Earth. However, human behaviors like illegal logging and wildlife trafficking are taking a toll on species across the continent.

Together with local communities and partners, we're working to protect Asia's unique wildlife. To devise inclusive conservation strategies, we collaborate with our allies to better understand the needs and relationships of local people and wildlife, foster coexistence, reduce the trafficking and use of wildlife products, and preserve species and ecosystems for future generations.



LIVING with Wildlife

From the forests of Vietnam to the islands of Java and Sumatra, our collaborative, community-based conservation models begin with the insights of people who live alongside wildlife. Together we're evolving strategies to reduce illegal and unsustainable trade, fostering sustainable alternative sources of income, and developing holistic approaches to help all life thrive.



Planning for the Future

A workshop conducted with local government partners in Vietnam centered on wildlife monitoring, rescue centers, community-based conservation initiatives, and discussion of strategies and action plans to drive successful outcomes for endangered native species.



Vietnam is an epicenter for biodiversity, with more than 480 known reptile species, many of which are endangered.

Counting Javan Leopards

A six-month survey revealed that Javan leopard populations outside Meru Betiri National Park are significantly lower than the most recent estimates within the protected area—data which will help inform new protections.



With only 29 suitable landscapes left for Javan leopards on their native island, understanding their population density—particularly outside of protected areas—is critical for conservation.



Protecting All

Our teams and partners successfully pioneered the use of a thermal drone to help spot tigers in Sumatran croplands, so wildlife and people can both stay safe.

● **Thermal sensors reveal tigers by their heat signatures, helping locate any venturing near communities.**

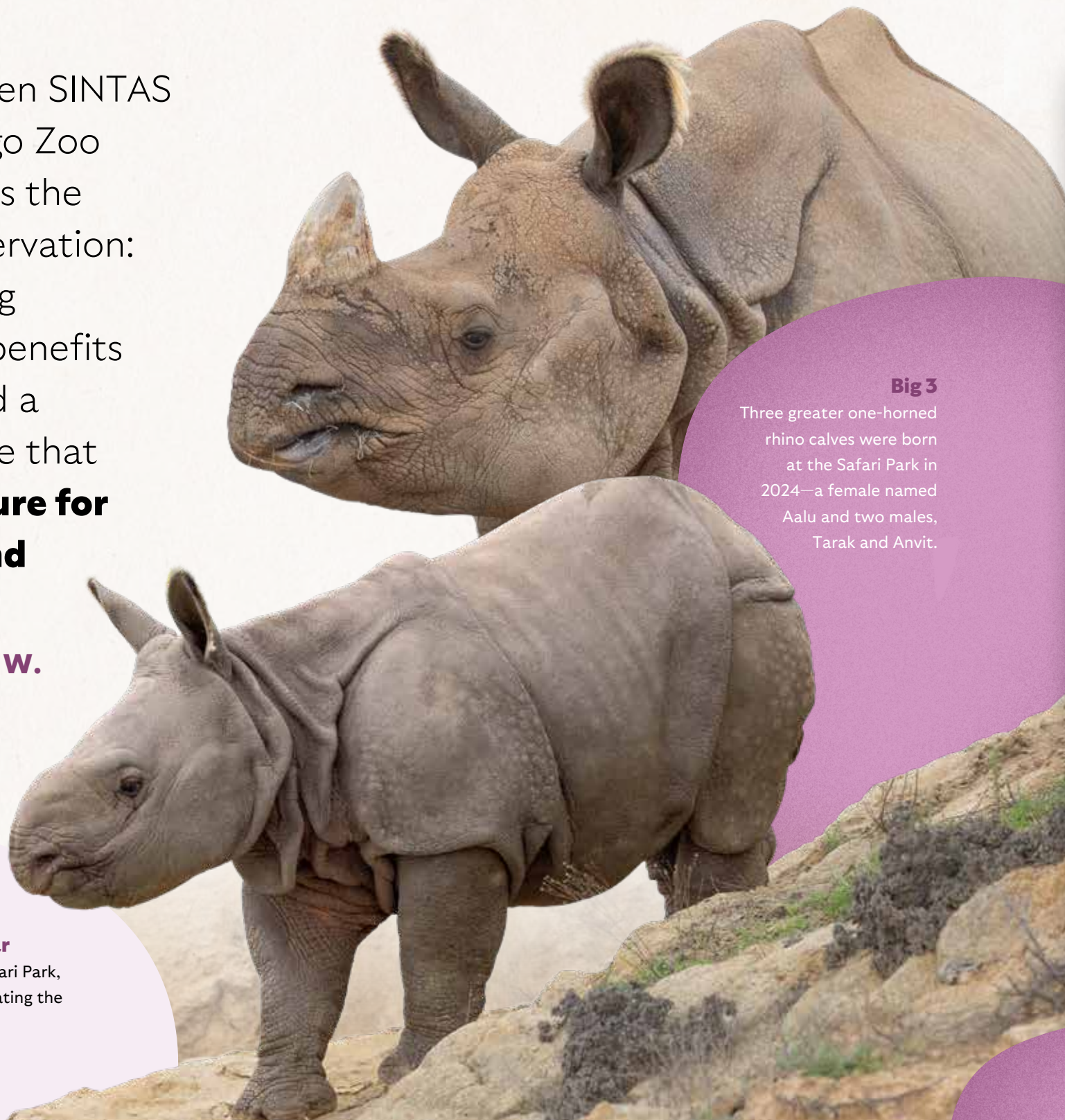
“The partnership between SINTAS Indonesia and San Diego Zoo Wildlife Alliance reflects the essence of global conservation: mutual respect inspiring innovation, reciprocal benefits fostering resilience, and a forward-looking alliance that **ensures a thriving future for Indonesian wildlife and people alike.**

—**HARIYO (BEEBACH) W.**
Director, SINTAS Indonesia



Wild Weekend: Asia and Lunar New Year

During this special weekend at the Zoo and the Safari Park, guests connected with wildlife in new ways, celebrating the ecosystems of Asia and becoming allies for wildlife.



Big 3

Three greater one-horned rhino calves were born at the Safari Park in 2024—a female named Aalu and two males, Tarak and Anvit.



A Most Welcome Addition

Barong, a male cub named after the Balinese king of spirits, was born to first-time mother Jillian this summer. Only 400–600 Sumatran tigers remain in their native Sumatra, so every birth is a critical addition.

Barong's arrival brings crucial genetic diversity to this critically endangered species, as Jillian's genes were previously unrepresented in the global population.



AFRICAN FOREST

Conservation Hub

African forests are a globally significant carbon sink, helping mitigate climate change. The region is critically important to the health of our planet and contains the world's second-largest tropical rainforest, an abundance of rare plants, and some of the most endangered primates on Earth.

In Cameroon's Ebo forest, located within the biodiversity hotspot known as the Guinean Forests of West Africa, we work hand-in-hand with local communities to protect wildlife and promote coexistence. Together, our teams and local partners protect vulnerable species and habitats, documenting animals and plants previously unknown to science and celebrating the cultural and ecological heritage of one of the largest and most ecologically intact and important rainforests remaining in the region. Local communities are at the center of conservation in the Ebo forest. As stewards of their shared ecosystem, they work closely with our teams to make inclusive decisions about future land management, ensuring their needs are met, their heritage is respected, and wildlife are protected in the process.



SUPPORTING Grassroots Conservation Efforts

Ebo forest is an important resource and home for the 40 communities surrounding its perimeter. Community-led initiatives, including the Gorilla Guardian Clubs and Chimpanzee Guardian Clubs, are crucial to achieving sustainable, inclusive, and equitable conservation in this biodiversity hotspot.

Community members collaborate with our teams to monitor habitats, organize community engagement activities, and enhance livelihoods through small-scale, sustainable projects such as cocoa farming, cassava processing, poultry farming, and soap-making.



Knowledge Is Power

Thanks to the generous support of the Zuest Family Foundation, an annual forest-wide survey offered insights on large animals and the ongoing threats they face, including evidence of bushmeat hunting and logging. Carried out on foot, the survey covered the entire forest (over 154 square miles) and took 55 days to complete as teams connected with traditional authorities in local villages along the way.



Teams recorded 15 different mammal species, 265 chimpanzee nests, and several forest elephant sightings.

Sustainable Solutions

Our teams in Cameroon developed sustainable solutions and recommendations for logging companies and the government to minimize the impact on the forest's rich biodiversity.

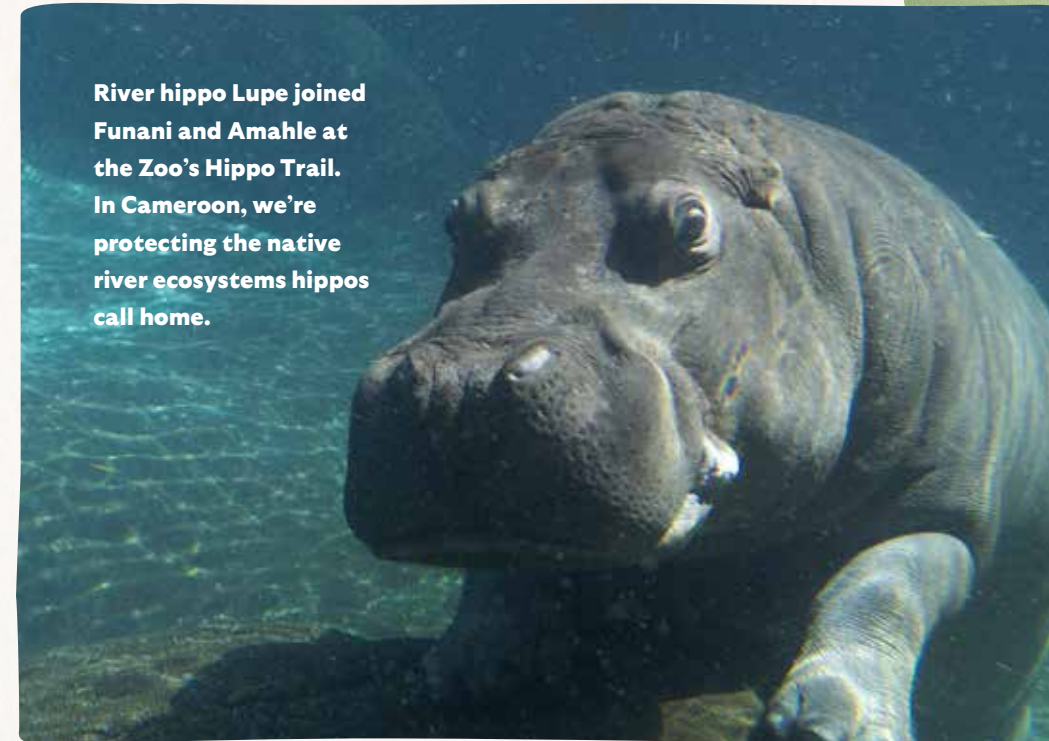


Wild Weekend: African Forest

"Out of the forest and straight into my heart" is how one guest described this annual event at the Zoo, connecting wildlife allies here to our work in the field.



River hippo Lupe joined Funani and Amahle at the Zoo's Hippo Trail. In Cameroon, we're protecting the native river ecosystems hippos call home.



"San Diego Zoo Wildlife Alliance's willingness to work in unprotected, remote lands is a Herculean task, but because of this, **we're present in a way other organizations aren't.**"

—DR. EKWOGE A.

Cameroonian and Co-Leader, African Forest Conservation Hub

In February, a male okapi calf, Bokasi, was born at the Safari Park to first-time mom Mahameli (Meli) and sire Mpangi. We're working to protect endangered okapis and their forest habitats.



OCEANS

Conservation Hub

Oceans cover more than 70 percent of Earth's surface. They're critically important to the health of our planet and are closely interconnected with, and support, life across the globe. Oceans pull in over two billion tons of carbon from the atmosphere each year, and billions of people depend on them for food and livelihood.

With the health of our oceans threatened by human activities resulting in climate change and pollution, the need for greater understanding and protection of these immense ecosystems is urgent. Through innovative technologies and collaborative partnerships, we apply our expertise, skills, and experience working with wildlife in San Diego, the Pacific Northwest, across the Arctic, and in southern Africa to protect oceans and marine life.



ADVANCING Innovations in Conservation

In the Arctic Ocean's rugged archipelago of Svalbard, Norway, icy fjords flanked by towering glaciers and rocky cliffs stand guard over a nearly untouched wilderness—a haven for polar bears and a critical denning area. However, as sea ice melts, bears must swim up to 100 miles in search of food—a tall order for adult bears, let alone cubs. Disappearing ice is also forcing many bears to come onto land in spaces where people live.

Our Conservation Technology Lab is creating new devices that overcome challenges of temperature, wind, and wildlife to gather data, increase understanding of species in remote locations, and inform conservation plans.

Tuning in on Polar Bear Dens

Custom automated cameras are providing new insights on how mother polar bears are coping with climate change.



Using drones with infrared sensors, we can pinpoint den locations and collect fine-scale images of the surrounding area and sea ice conditions.



Bear Tracks

We deployed GPS transmitting devices as part of a long-term monitoring program to help understand and minimize the impacts of climate change.

In 2024, this included:

18 ear tags (on males and subadults) to monitor sea ice movement

10 GPS tracking collars (on females with cubs)

40 remote cameras to observe polar bear feeding dynamics



Super Sniffer

In the Pacific Northwest's Salish Sea, our partner's specially trained dog, Eba, sniffs out killer whale fecal matter. Our Reproductive Sciences team analyzes samples for health and pregnancy status, providing critical insights to help devise conservation plans.

Taken under NMFS permit #26288. wildorca.org



Southern Resident killer whales are endangered, with fewer than 75 remaining.

Collected under NMFS Permit #27052

“Collaborating with San Diego Zoo Wildlife Alliance was critical for gaining early momentum and success developing cryopreservation protocols for sunflower sea stars. **Their eagerness to take on this unique challenge and willingness to collaborate with our partners is a testament to their dedication to supporting conservation projects in their backyard.**

—**ASHLEY K.**
Director, Sunflower Star Laboratory



Wild Weekend: Oceans

This exciting weekend at the Zoo immersed guests in the groundbreaking work we are doing across the world's oceans and along our own Pacific coast.



Collaborating for Sea Otters

We joined the Coordinating Committee of the Sea Otter Reintroduction Collaborative, supporting efforts to recover sea otters through translocations, primarily in California.

Coastal kelp forests capture and absorb carbon dioxide from the atmosphere, and healthy sea otter populations are crucial to keeping these ecosystems in balance.



Saving Stars

We successfully cryopreserved sperm from critically endangered sunflower sea stars in our Frozen Zoo, making it possible to fertilize eggs and help partners recover disease-ravaged populations.



Helping Oiled Wildlife

As new members of the Oiled Wildlife Care Network, our teams will rescue and rehabilitate wildlife affected by oil or chemical spills in California and support wildlife care efforts related to spills around the world.

AMAZONIA

Conservation Hub

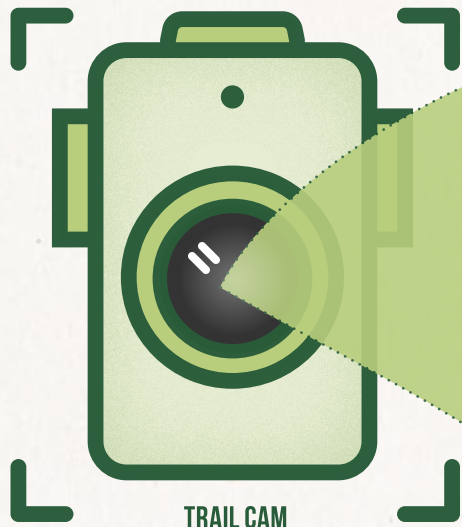
As the largest tropical rainforest in the world, the Amazon is often called the “lungs of the planet.” It generates oxygen, impacts weather patterns worldwide, and plays a vital role in mitigating climate change. It’s also one of the most biodiverse places on Earth, with countless species found nowhere else. Nevertheless, many regional and global challenges threaten Amazonia’s wildlife, local people, and habitats.

We deploy cutting-edge technology, apply expertise in genomics and wildlife monitoring, and enhance local efforts as part of our commitment to protecting the biological and cultural richness of the Peruvian Amazon.



SCIENCE at the Source

At the Stiefel-Behner Research Facility at Cocha Cashu Biological Station in Manú National Park and the Wildlife Conservation Laboratory at the Los Amigos Biological Station, both in Peru, today’s **genomic advancements and artificial intelligence technology** have allowed us to monitor and provide care for wildlife in ways we could only imagine a few short years ago.



Trail camera photos and videos are used to train an artificial intelligence model to identify bears and other species in images from Andean forests, providing critical data on populations.



Bear Hair Milestone

Thanks to advances in conservation genomics, **more than 300** noninvasive samples (including hair and feces) collected from Andean bears in 3 regions will be analyzed to determine bear identity, sex, and geographical origin.

Keeping Track of Jaguars

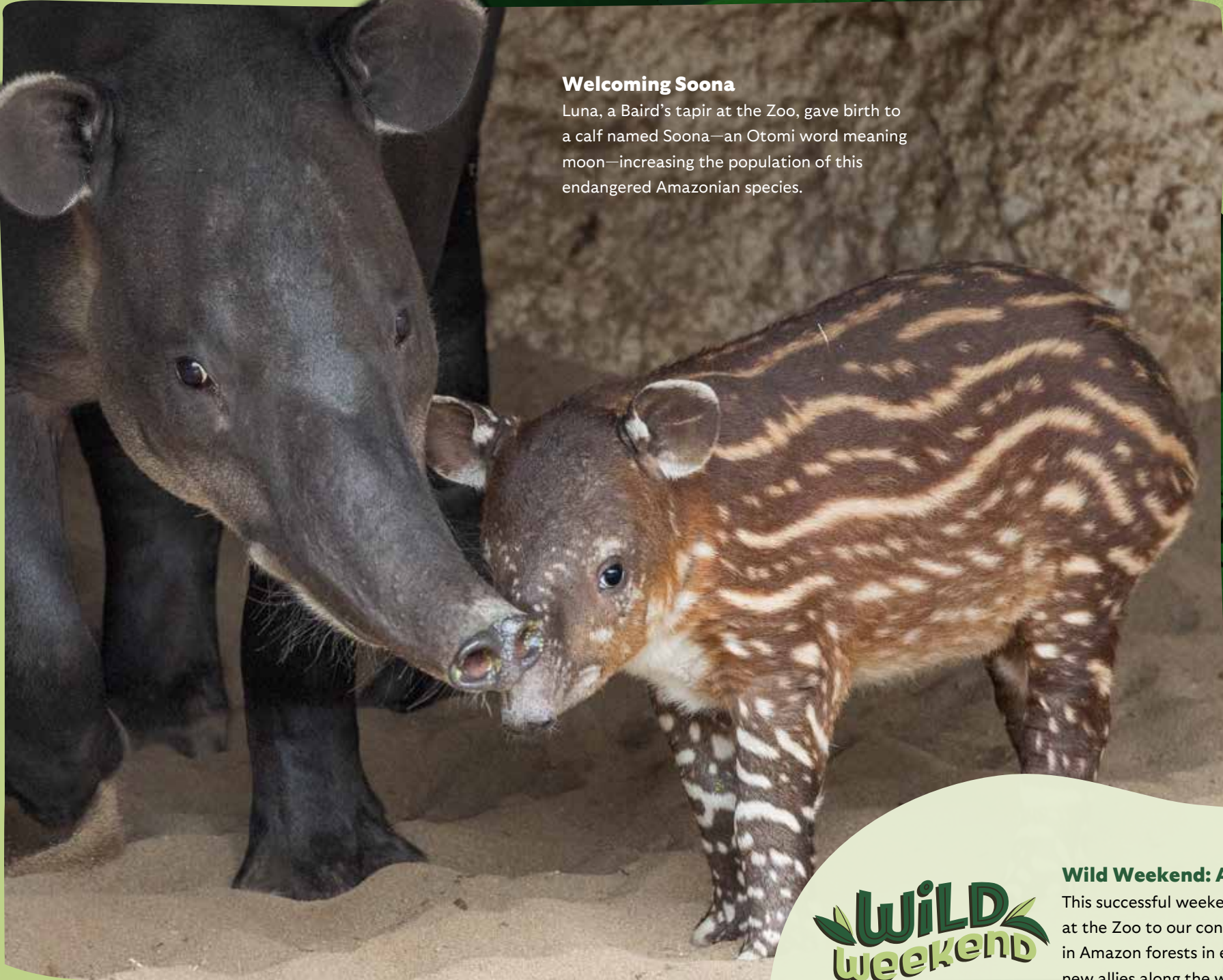
Teams installed the second large-scale trail camera grid in southeast Peru, with **75 locations** to monitor jaguars.



We work with local communities to help implement human-jaguar coexistence strategies.

Welcoming Soona

Luna, a Baird’s tapir at the Zoo, gave birth to a calf named Soona—an Otomi word meaning moon—increasing the population of this endangered Amazonian species.



Wild Weekend: Amazonia

This successful weekend helped connect guests at the Zoo to our conservation work and wildlife in Amazon forests in enriching ways, creating new allies along the way.

One by One

Wildlife Health team members collaborated with our partners at Taricaya Ecoreserve and Amazon Shelter to perform **more than 100** examinations on injured animals being rehabilitated, including primates, parrots, and Andean bears.



“Few studies have been devoted to this part of the Amazon rainforest, **so not much is known about its wildlife ecology.** That is what makes the conservation work we are doing so important.

—JOSE LUIS MENA A.

Scientific Coordinator,
Amazonia Conservation Hub

AUSTRALIAN FOREST

Conservation Hub

Found primarily along the northern and eastern coasts of the continent, Australian forests are home to some of Earth's most unique and iconic wildlife. Eucalyptus forests account for the majority of these habitats. They provide food, shelter, and resources for wildlife and local people. They're also highly vulnerable to bushfires and drought—which are growing in frequency and severity due to climate change and habitat fragmentation.

We've been caring for koalas at the Zoo since 1925, and the Safari Park is currently home to the only platypuses outside of Australia. We work closely with Australian partners to put our expertise into action, supporting studies on the effects of wildfires on environments and wildlife, caring for displaced animals, and developing strategies to increase resilience to fires while maintaining healthy habitats for native species.



UNIQUE Species, Unique Collaborations

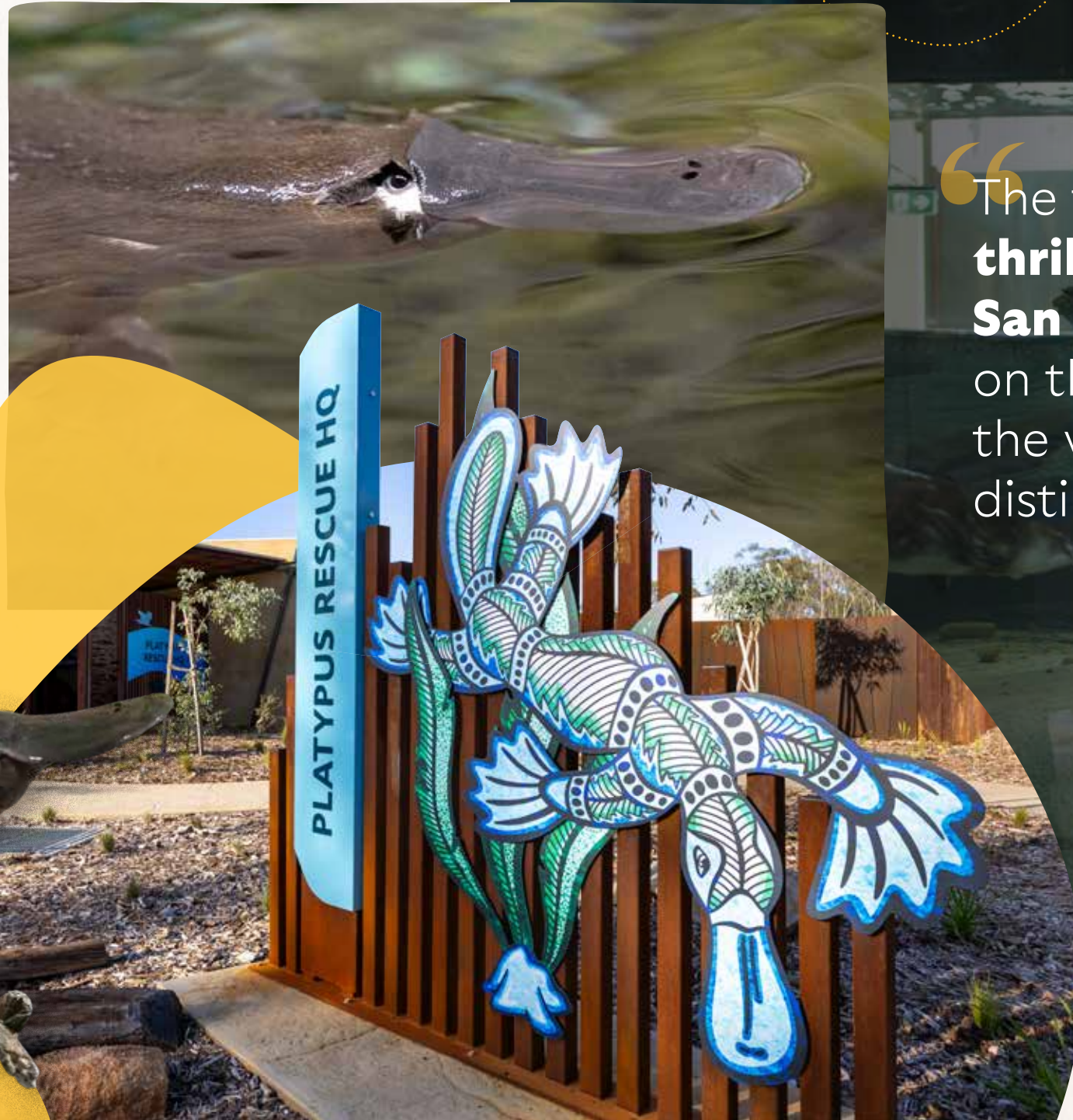
Our partnership with Taronga Conservation Society Australia will mark its 100th year in 2025, a long-standing alliance supporting one-of-a-kind species. Elusive and nocturnal, platypuses are difficult to study in their native ranges, making it crucial for experts to work together to keep this near-threatened species from becoming endangered. Other global partnerships are also accelerating advancements in conservation genomics for koalas.

Protecting the Platypus

We're supporting Taronga's groundbreaking efforts at the newly opened Platypus Rescue HQ. With room to rescue, rehabilitate, and release platypuses back into freshwater habitats, it will play a leading role in saving this species.



As severe weather events like flooding and megafires increase, this powerful partnership helps us continue to learn about platypuses and what they need to survive and thrive in native habitat.



“The team and I at Taronga are **thrilled to collaborate with San Diego Zoo Wildlife Alliance** on the conservation of one of the world's most evolutionarily distinct mammals, the platypus.

—**DR. JUSTINE O.**

*Manager of Conservation Science,
Taronga Conservation Society Australia*

Working Together for Wildlife

Paul A. Baribault, president and chief executive officer of San Diego Zoo Wildlife Alliance, and Cameron Kerr, chief executive officer of Taronga Conservation Society Australia, celebrate the opening of Taronga's Platypus Rescue HQ and their organizations' nearly 100 years of collaboration.



Optimizing Koala Health and Care

Koala retrovirus (KoRV) poses a threat to vulnerable populations. We're collaborating with partners to analyze KoRV across koala genomes to improve health and conservation outcomes for the species.



Our partner Illumina completed whole genome sequencing of 91 koalas we've cared for.

Working with Germany's Leibniz Institute, we are discovering how KoRV integration into the genome varies and how these variations are inherited.



High-Tech Tracking

Data from new thermal drones flown over the forest canopy at night is helping our partners map locations and better track koalas as they move through the landscape.



Wild Weekend: Australian Forest

Australia may be 7,500 miles away, but this event at the Safari Park transported guests to the continent, letting them experience its unique native wildlife and explore ongoing conservation challenges.



Koala-ty Care

Our team recently removed a mass from Moa, a two-year-old koala at the Zoo, using a computed tomography (CT) scan to precisely locate the lesion during surgery. Moa is expected to make a full recovery.

SAVANNA

Conservation Hub

Some of the planet's most iconic—and endangered—wildlife roam Africa's savannas. Covering nearly half the vast continent, these beautiful, carefully balanced grassland ecosystems are the vital foundation for complex food webs and great migrations. They're also integral to the pastoralist livelihoods of local people who share the savanna.

In northern Kenya, we partner with local communities and organizations on innovative, comprehensive conservation strategies. Integrating cutting-edge science with our expertise in wildlife care and health, we collaborate to save wildlife and elevate local voices across the savanna so all who share it can thrive.



COMMUNITY-BASED Conservation

Conservation is, at its heart, about people. Our teams and partners, including Twiga Walinzi (“Giraffe Guards”) and Chui Mamas (“Leopard Mothers”), work to mitigate human-wildlife conflict, challenges with large mammal coexistence, and poaching. They organize community workshops, work alongside local governments and conservancies, and **collaborate to put community-led conservation solutions into action**, seeding coexistence from the ground up.

We are grateful to Maryanne and Irwin Pfister for their leadership gift toward community-based conservation in the Savanna Hub.

Counting Savanna Icons

A Twiga Walinzi survey created the most detailed assessment of giraffe populations to date in two vital giraffe movement corridors and poaching hot spots.

Women’s Conservation Forum

This second annual gathering focused on human-elephant coexistence, fostering a network of partnership, support, and community-based conservation across the region.

Laboratory in Northern Kenya (LINK) Opens

This veterinary diagnostic laboratory is a Kenyan national resource for wildlife and is the result of a collaborative initiative, with our team supporting construction and sharing expertise in its planning.

A New Home Base

Our contributions and impact continue to grow, so we opened a new local office, where Kenyan team members are expanding our support for community conservation, wildlife field monitoring, and wildlife health programs.

Hope for the Future

Teams confirmed that the northern white rhino cell lines banked in the Frozen Zoo contain enough genetic diversity to avoid a population bottleneck if used to support the recovery of the species.

The First in 50 Years

Together with our partners, we translocated **21 critically endangered black rhinos** to an area from which they had previously disappeared due to rampant poaching.



26,000 protected acres of Loisaba Conservancy form Kenya's newest rhino sanctuary.

"I find working with San Diego Zoo Wildlife Alliance rewarding and exciting—they are a great partner and share my commitment and belief that **conservation is ultimately about people.**

—**TOM S.**
CEO, Loisaba Conservancy

Protecting Cycads

Cycads are among the most threatened species in the world. We are a species steward for *Encephalartos* cycad species native to Africa, leading collaborative conservation efforts and growing these endangered plants in a protected garden at the Safari Park.



Wild Weekend: Savanna

This fun-filled event at the Safari Park brought guests wildlife insights and stories of conservation in action.

Reimagining the Heart of the Safari Park

Denny Sanford Elephant Valley is the epicenter of our global elephant conservation work, and the most ambitious project in Safari Park history. Our annual Rendezvous In The Zoo (R·I·T·Z) gala in June helped us meet a major fundraising goal benefitting this iconic project. We wish to thank everyone who has helped support Elephant Valley, where guests of all ages will connect with elephants like never before.

A heartfelt THANK YOU

to Denny Sanford
Stephanie Petersen
Joanne C. Warren and Family
Marian Frank
Tisha Hunte Wheat
Lisa and Wayne Stelmar
Frank and Linda Riolo
Nelson Millsberg
The Halicioğlu Family Foundation
Donald and Darlene Shiley
Dr. Charles E. and Lucinda Richardson

**for their outstanding contributions
to Elephant Valley**

Education Starts Here

Sparkling a Curiosity for Wildlife

Education is crucial to achieving our vision of a world where all life thrives. We engage and inspire wildlife allies of all ages to join us in protecting the biodiversity of the planet we all share through hands-on learning opportunities.

Our programs begin at the Zoo and Safari Park, including the Conservation Education Lab at the Beckman Center, offering all-grade-level field trips and summer camps, wildlife exploration options for teens, teacher workshops, and more. These education efforts continue online through extensive resources and across the globe through our Conservation Hubs.

Transformative Learning Experiences in 2024

Countless lives are touched by our programs, many of which are made possible through the generosity of our committed donors.



Nearly **315,000 students** visited us.



Over **33,000 students** participated in one of our **32 guided learning programs**.



We were the **largest provider** of informal STEM education in San Diego County.



We served **more than 90 school districts** from 6 counties in Southern California.



Nearly **72 percent** of our school groups came from Title I-eligible schools.



We provided **547 bus transportation reimbursements**, creating access to our programs for school groups who might otherwise not be able to attend.



Our **3 education teams**, with 85 team members, engaged students in **over 218,000 learner contact hours**.



CLASSROOMS
WORLDWIDE

Making an Impact

To learn more about our programs and the broad scope of our education efforts, visit sdzwa.org/education.

Mentoring Tomorrow's Conservationists

We offer high school students hands-on opportunities to learn about environmental issues, develop skills, and participate in conservation projects around San Diego County through our Conservation Corps—and **100 percent** of eligible students chose to join us again for their next semester.

Internships, Fellowships, and Externships

We provided hands-on learning opportunities for students in

25

FELLOWSHIPS

18

INTERNSHIPS

17

EXTERNSHIPS

across wildlife care, conservation science, marketing, IT, and more.

We hosted **185 educators** for workshops in conservation science—the most participants ever hosted in a single summer! This marked our 19th year of teacher workshops, which have trained educators from all **50 states** and more than **25 countries**, reaching an estimated **2 million students** to date.

Building Connections

Each month during the school year, we delivered **lessons** to every classroom at San Pasqual Union School, in addition to two guided **field trips** per class, connecting students with science, nature, and conservation.

LOCAL LEARNERS

Through in-class lessons, virtual wildlife care specialist chats, and a field trip to the Safari Park, more than 1,600 6th grade students from Escondido schools learned about rhinos and the need to protect them through our collaborative program, Crash into Science.

Inspiring Students

Coming from all over Southern California, more than **7,000 students** joined our Exploring Conservation Science field trips to learn about saving species and action steps they can take to make a difference for wildlife.



Stronger Together

We received multiple awards from the U.S. Fish and Wildlife Service to support our conservation efforts in the U.S. and provide our Wildlife Rangers, Teacher Workshops, and Exploring Conservation Science programs to students and teachers in our Southern California region.

Summer Adventures

2,088 campers joined us at the Zoo to connect with wildlife, explore conservation, and have fun during our week-long camps. Over 11 percent of campers attended at no cost to their families thanks to our generous donors.

Resources with Reach

Our on-site library served nearly **1,000 visitors** and provided hundreds of scholarly articles to team members. Our wildlife fact sheets—which compile rich information on many species—were downloaded more than **2.3 million times**.

Education Across the Globe

Conservation Begins with People

Those who live among and share spaces with wildlife have the power to make long-term, sustainable changes that help all life thrive. From here in San Diego to our Conservation Hubs across the globe, we engage allies who can make crucial impacts in their communities as agents of change.



Outreach and Education

Sharing Skills in Kenya
In Kenya, **60 students** were trained in trail camera data collection and 15 staff members gained skills in Camera Base software for collating camera images.



Connecting with Students
At Cocha Cashu Biological Station, **local students of all ages** learn about the importance of biodiversity, and college students join us for conservation internships.

Boosting Biodiversity
In San Diego, **60 Native Biodiversity Corps students from 3 partner high schools** designed and planted native gardens on their school campuses, creating vital habitat corridors that attract and support local wildlife. **They've added 18 new and restored native gardens**, totaling more than 8,600 square feet of native wildlife habitat.



Engaging Allies for Polar Bears
As an Arctic Ambassador Center, we collaborate with our **partner Polar Bears International** on education, research, and action programs—engaging our allies to address the challenges polar bears face in a warming climate.

Conservation Education in Cameroon
Outside of Mbam Djerem National Park, **more than 500 community members** have joined our team for conservation education and special activities at the Mbakaou Wildlife Education Center.



Building Capacity



Community Inquiry
Students worked with our teams **to sequence the genome of the critically endangered palila**, gaining lab experience in 2 workshops on the islands of Hawai'i and Oahu.



Gathering Crucial Wildlife Data
With our partners, **we interviewed 254 people** around **Pu Huong Nature Reserve** in Vietnam, collecting information on wildlife species to better understand the area's biodiversity.

Building a Butterfly Network
We hosted our second North American Monarch Institute workshop with **30 teachers from Southern California and Mexico**, building a network of collaboration in the species' western range.



Koala Care to Share
We care for **the largest colony of koalas outside Australia** and provide training and support for zoos preparing to host koalas, helping secure the future for this threatened species.

Leaders of Tomorrow

Support for Working Conservationists
In our commitment to building local conservation capacity in Cameroon, **we're supporting 9 of our local staff** as they pursue advanced degrees in related fields.



Encouraging Tomorrow's Innovators
We **supported a researcher in Vietnam** in attaining his master's degree in conservation, helping him share his skills and build capacity in his community.

Thank You to Our Family

Your Support Makes It All Possible

Our members, friends, donors, and allies make everything we do possible. You are at the heart of our work to save, protect, and care for wildlife in San Diego and across the globe, and we are equally honored to have a place in your hearts and in your lifelong memories.

*Thank you for being a part
of our family.*

400,000

members call the Zoo and Safari Park their home away from home—one of the largest membership bases of any zoo in the world.

Member Benefits



Year-round admission to the Zoo and Safari Park



Access to our latest updates and happenings



Our bimonthly magazine, San Diego Zoo Wildlife Alliance Journal



Wild PerksSM discounts on special experiences, dining, merchandise, and so much more.

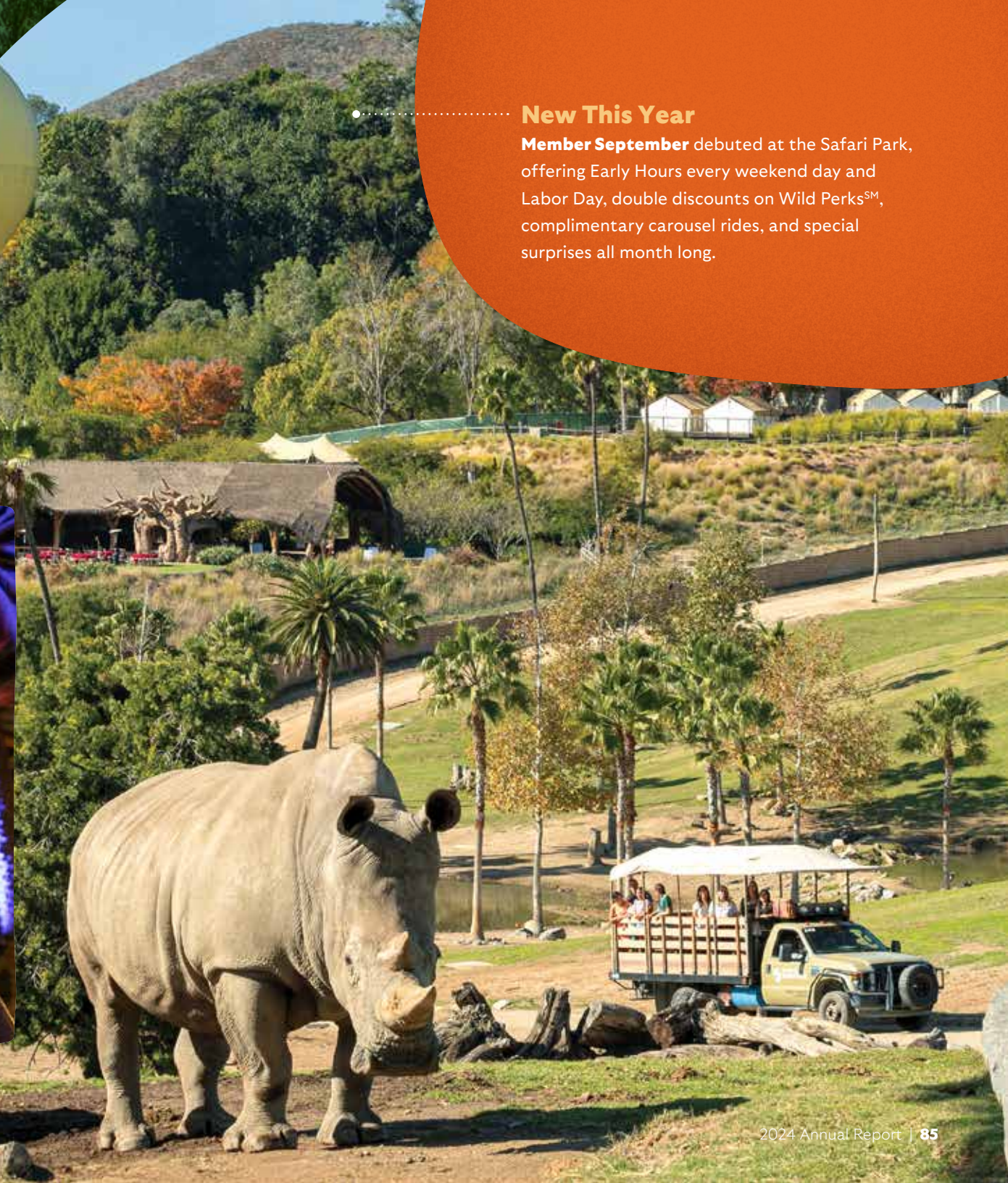


Exclusive member events take place throughout the year, including Member September, Member Appreciation celebrations, exclusive previews of events like Jungle Bells and Autumn Festival, and regular early morning access to the Zoo and Safari Park.



New This Year

Member September debuted at the Safari Park, offering Early Hours every weekend day and Labor Day, double discounts on Wild PerksSM, complimentary carousel rides, and special surprises all month long.



President's Clubs

These dedicated friends are committed to our vision of protecting wildlife. Along with receiving all member benefits, they are invited to join us throughout the year for exclusive events to connect more deeply with our conservation work.



PRESIDENT'S AMBASSADORS



PRESIDENT'S PATRONS



PRESIDENT'S PARTNERS

Other membership levels offer amazing opportunities for exploration and adventure at our two incredible parks, with varying benefits and options for all wildlife allies.

Membership Matters

Visit sdzwa.org/membership to become an ally for wildlife today.

“San Diego Zoo Wildlife Alliance values us as **trusted partners, and this makes the donor experience unique and incredibly rewarding.** President's Partners experiences provide direct insight into the Zoo and the Safari Park and the important work being done around the world. We also enjoy the many fun experiences tailored for donors!

—ANITA M.
President's Partners member

Donor Groups

As some of our closest allies, these committed groups enjoy a range of exclusive benefits, including events, presentations on wildlife and conservation, and updates from the executive team. For information on how to join us, see page 110.



Evelyn and Ernest Rady



Nanci and Stephen Schrieber-Smith



Peter and Sandra Phillips

Ocelots

This remarkable group helps our mission through commitment to education and fundraising.

Aardvarks

As an enthusiastic circle of longtime supporters, these donors are committed to our mission and stay connected with us throughout the year at special events.

This year, we celebrated the birth of the first aardvark cub ever born at the Safari Park. The cub will be a wildlife ambassador.

We thank Ernest and Evelyn Rady for their generous support through Rady Ambassadors.

Wildlife Heroes

This year, **5,500 monthly donors** were committed to saving and protecting endangered species and ecosystems around the world, showing their support through their sustaining monthly gifts.

Heritage Guild

A heartfelt thank you to those who are creating a lasting legacy by including us in their estate plans, helping us meet the conservation challenges of today and tomorrow. Those who have informed us of their planned giving join our honorary Heritage Guild, enjoying access to exclusive benefits such as special events.

We thank Nanci and Stephen Schrieber-Smith, whose legacy gift will make a difference for future generations.

ZOO100

This vital circle of donors helps us care for wildlife, through this century and beyond, with their generous endowment gifts.



This group of philanthropists, conservation leaders, and volunteer leaders provides counsel and support toward achieving an even greater wildlife conservation impact here in San Diego and throughout the world. We are honored and grateful for their commitment and leadership.

Collaborations in Conservation

Our 2116 Advisors joined us at the Safari Park for their second annual convening. At this half-day event, they met with conservation scientists and wildlife care experts to hear firsthand about ongoing work in San Diego and around the world and toured labs at the Arnold and Mabel Beckman Center for Conservation Research.

A lunch and panel discussion featured insights from global conservation leaders from our African Forest and Savanna Conservation Hubs.



Myrna Frame



Panelists (from left) Stephen Chege; Ekwoke Abwe, Ph.D.; Megan Owen, Ph.D.; and Tom Silvester.



Chris Eddy



Gwendolyn Sontheim



A select group of wildlife allies joined us for the second annual WILD event, connecting with wildlife and our conservation science teams while enjoying entertainment, fine dining, and more.



WILD Co-Chairs Steve and Lauren Simpson (left) and Rolf and Mary Benirschke (right) enjoy the evening.



We thank our WILD Presenting Sponsors, Zoiner and Ashley Tejada and FoundationalLLM powered by Solliance.



Groovy Gala

At the 41st Rendezvous In The Zoo (R·I·T·Z) gala, guests enjoyed a fun-filled and festive 1970s-themed event with fine dining, exciting auctions, and dancing, benefiting the new Denny Sanford Elephant Valley and a brighter future for elephants worldwide.



Cindy and Chuck Richardson



Darlene Shiley

We're honored that this year's R·I·T·Z helped us **meet our \$60 million fundraising goal** for Elephant Valley.

“What inspires us as donors is San Diego Zoo Wildlife Alliance’s worldview, and the **integration of wildlife conservation for all who share the landscape**—plants, animals, and human beings.

—RUTH ANN AND PAUL P. Donors

THANK YOU to our 2024 R·I·T·Z Co-Chairs Kim and Marco Alessio and Caroline and Emil Wohl.



An Alliance for the World



Upholding our values through four core pillars enables us to bring our best forward—our century of expertise, teams, partnerships, and the ability to engage allies worldwide—so we can be the most effective conservation organization for the world.

Here's more about how we collaborated, innovated, inspired, and thrived in 2024.



COLLABORATE

As an Alliance, we make the greatest conservation impact by uniting expertise and collaborating strategically across the globe. We are grateful to all our partners and contributors for their teamwork, innovation, and insight.

Amazon Conservation
Arizona Game & Fish Department
Association des Chefs Traditionnels Riverains de la Forêt d'Ebo Forest (ACTRIFE)
Association of Zoos and Aquariums (AZA)
Australian Network for Plant Conservation
California Department of Fish and Wildlife
California Department of Parks and Recreation – Torrey Pines State Natural Reserve
California Plant Rescue
Center for Plant Conservation
Centro Bartolomé de las Casas
Centro de Innovación Científica Amazónica (CINCIA)
Centro de Investigación Científica y de Educación Superior de Ensenada (CICESE)
China Center for Research and Conservation for the Giant Panda, National Forestry and Grassland Administration
China West Normal University, Giant Panda National College
China Wildlife Conservation Association
Chinese Academy of Sciences
Chui Mamas
Commonwealth of the Northern Mariana Islands Department of Lands and Natural Resources, Division of Fish and Wildlife
Conservación Amazónica (ACCA)
Conservation Biology Institute
Fisheries and Oceans Canada
Djarum Foundation
Edwards Air Force Base
Environment and Climate Change Canada (ECCC)

Ewaso Lions
Field Projects International
Forestal Otorongo
Gerencia de Desarrollo Forestal y de Fauna Silvestre Loreto
Giraffe Conservation Foundation
Global Conservation Consortium for Cycads
Gobierno Regional de Madre de Dios
Gordon and Betty Moore Foundation
Government of Ontario – Ministry of Natural Resources
Government of Vietnam
Grevy’s Zebra Trust
Hobart and William Smith Colleges
Illumina
Institute for Ecology and Conservation
of Nature at Vinh University
International Union for Conservation of Nature (IUCN) Species
Survival Commission (SSC)
Jiangxi Agricultural University
Kaua’i Forest Bird Recovery Project
Kealakehe High School
Kenya Wildlife Service
Leibniz Institute for Zoo and Wildlife Research
Lewa Wildlife Conservancy
Loisaba Conservancy
Maderacre
Maui Forest Bird Recovery Project
Meru Betiri National Park
Monarch Joint Venture

Mpala Research Centre
Mushkegowuk Council
Namunyak Conservancy
National Oceanic and Atmospheric Administration (NOAA)
Natural Resources Conservation Agency of West Sumatra
Northern Rangelands Trust
Omaha’s Henry Doorly Zoo and Aquarium
Organización Vida Silvestre (OVIS)
Palau Community College
Peninsular Pronghorn Recovery Program
Polar Bears International
Rainforest Expeditions
Reteti Elephant Sanctuary
Revive & Restore
Ruko Community Conservancy
Salk Institute for Biological Studies
San Diego Botanic Garden
San Diego Foundation
San Diego Habitat Conservancy
San Diego Management & Monitoring Program
San Diego Natural History Museum
San Diego State University
San Diego Unified School District
San Pasqual Band of Mission Indians
Sarara Foundation
Save the Elephants
Save the Indonesian Nature and Threatened Species (SINTAS)
Science for Wildlife

Scripps Institution of Oceanography
Servicio Nacional de Áreas Naturales Protegidas (SERNANP)
Servicio Nacional Forestal y de Fauna Silvestre (SERFOR)
Solliance
South African National Biodiversity Institute (SANBI)
State of Hawai’i Department of Land and Natural Resources,
Division of Forestry and Wildlife
Stony Brook University
Sunflower Star Laboratory
Taronga Conservation Society
The 'Alalā Project
The Huntington
The Living Desert
The Nature Conservancy
The University of Queensland Koala Ecology Group
UNESCO Lima – Proyecto Amazonia
Universidad Nacional Agraria La Molina –
Facultad de Ciencias Forestales
Universidad Nacional Mayor de San Marcos
Universitas Gadjah Mada, Yogyakarta
University of Alberta
University of California, Davis
University of California, Los Angeles
University of California, San Diego
University of California, Santa Cruz
University of Copenhagen
University of Illinois Urbana-Champaign
University of Southern California

U.S. Department of Agriculture Forest Service
U.S. Fish and Wildlife Service
U.S. Geological Survey
U.S. Navy
Vista Equine Colorado
Volcano School of Arts & Sciences
VulPro
Waiākea High School
Wild Orca
Wildlife Research & Training Institute (Kenya)
Xerces Society for Invertebrate Conservation



INNOVATE

Together we pioneer new ideas and approaches to engage allies worldwide and ensure the long-term health and survival of wildlife.



Visit Our Parks from Anywhere

Live streaming wildlife cameras and online content with complimentary educational programming keep our allies engaged, offering a closer look at wildlife and their habitats.

**54.8
million**

views on our live streaming
wildlife cameras.



We thank Nancy and Chuck Lindsay for their support of Safari Excursions.



Now Boarding

All safari adventures and special experiences at the Safari Park now begin in one convenient location: our new Safari Excursions station. Guests can step aboard a safari truck or cart to embark on adventures to sprawling savannas and behind-the-scenes destinations.







**San Diego Zoo
Wildlife Alliance
Adventures**



Irwin and Maryanne Pfister, with expedition leader Promise Shayo.

Explore the World with Us

Our conservation experts take wildlife allies on unforgettable adventures to some of the most awe-inspiring places on the planet. Each expedition is 100 percent carbon neutral, supporting the future of sustainable travel.

In 2024, passionate wildlife allies joined us for the following life-changing experiences:



The Wilds of Borneo



Botswana Explorer Safari



Jaguars and Wildlife of Brazil's Pantanal



Kenya Migration and Reteti Adventure



Madagascar Wildlife Adventure



INSPIRE

We share our passion for nature to increase understanding, empathy, advocacy, and action for wildlife.



RICK SCHWARTZ



MARCO WENDT



Winning New Allies—and Honors

Our 2024 Rose Parade float, “It Began with a Roar,” depicted iconic wildlife including Rex the lion, whose mighty roar sparked a dream more than a century ago and inspired our world-renowned Zoo.

Sweepstakes Award

Our float brought home the top honor of the event.

50 million+

More than 50 million people in 170 countries tuned in.



Engaging Readers

San Diego Zoo Wildlife Alliance Press offers books for all ages, inspiring allies worldwide through illustrated children’s books, adult nonfiction, and more.

20 Episodes

Season three of our *Amazing Wildlife* podcast was filled with behind-the-scenes wildlife insights and took listeners on a journey around the world.



Listen In!

**Bringing Smiles
Where They're Needed Most**

The San Diego Zoo Wildlife Explorers television channel provides educational wildlife programming to **26.1 million children and their families**, bringing happiness, hope, and healing. We thank Denny Sanford for his generous support to make this programming possible. It's now available in:

389

hospitals, clinics, and
Ronald McDonald Houses

48

states and Washington, D.C.

14

countries

“At times, the only thing that brings joy or interest to our son is the Zoo channel. As a mother, to see there is something that he likes in his hardest moments is just the best. Thank you for having this.

—MOTHER OF A PATIENT

**Reaching Allies
across the Globe**

**425
billion+**
total media impressions

**\$4.4
billion+**
in media value, enabling
us to reach wildlife allies
across the globe

**286%
increase**
in media impressions
over last year

Social Media and Web

75.7 million
YouTube views

2.4 million
Facebook followers

2.6 million
TikTok followers

1.7 billion
Giphy impressions

1.5 million
Instagram followers

100K
Threads followers

36.3K
LinkedIn followers

182K
Twitter/X followers

30.8K
Pinterest followers

125 million+
impressions on our websites

54 million+
views on our live wildlife cams

56K
Bluesky followers

THRIVE

Together we find new ways to bring hope, inspiration, and smiles as we share resources, inspire passion for nature, and ensure our parks are inclusive for all.



SALUTING OUR U.S. ARMED FORCES

Our Military Community

San Diego is home to one of the United States' largest military communities, and we're proud to have a long history of creating connections with them.

Making It Possible

The Bashor Family Patriots Fund **guarantees active duty service members year-round admission to our parks and supports critical community engagement opportunities** on grounds for wounded warriors across our region. We thank the late Jim Bashor, a U.S. Army veteran, and his wife Dianne Bashor for making this possible.

100,000+

In 2024, more than 100,000 active duty military personnel received complimentary admission to the Zoo and Safari Park.

Wild Heroes

Through the Bashor Family Patriots Fund and collaboration with Naval Medical Center San Diego, Camp Pendleton, and other military resources, **our Wild Heroes program provides opportunities for wounded armed forces personnel and their families** to visit the Zoo, connect to the healing aspects of nature and wildlife, and spend time with other veterans as they transition to civilian life.

981

service members and their family members participated in the Wild Heroes program—in 20 events.

Support for Military Families

We participate in a wide array of **special events for service members and their families**, including hosting a Month of the Military Child event, a Fleet Week recognition luncheon, and the Navy, Marines, and Coast Guard Sailor of the Year event.

The Power of Community: Strengthening Us All for a Better Future

At its heart, conservation is about people. We are stronger together and have an even greater impact by honoring, respecting, and engaging all members of our community.



Pride in San Diego

With our Team Tourism partners—the San Diego Tourism Authority, the San Diego Convention Center, and the San Diego County Lodging Association—we joined worldwide celebrations for LGBTQIA+ Pride Month at San Diego’s Pride Parade, one of the largest in the nation.



Accessible Employment

We’re hiring diverse team members with varying abilities and forging new alliances as we work with various workforce groups to be an employer of choice for all.

Increasing Accessibility

Our Wildlife Health team offers a veterinary mentorship program to make veterinary medicine a more accessible career path for underrepresented communities.

7 Students

who studied with our veterinary teams were able to attend the American Association of Zoo Veterinarians annual conference in Toronto through a generous grant from the Institute of Museum and Library Sciences.

3 Students

had posters or oral presentations accepted at the conference.



500+

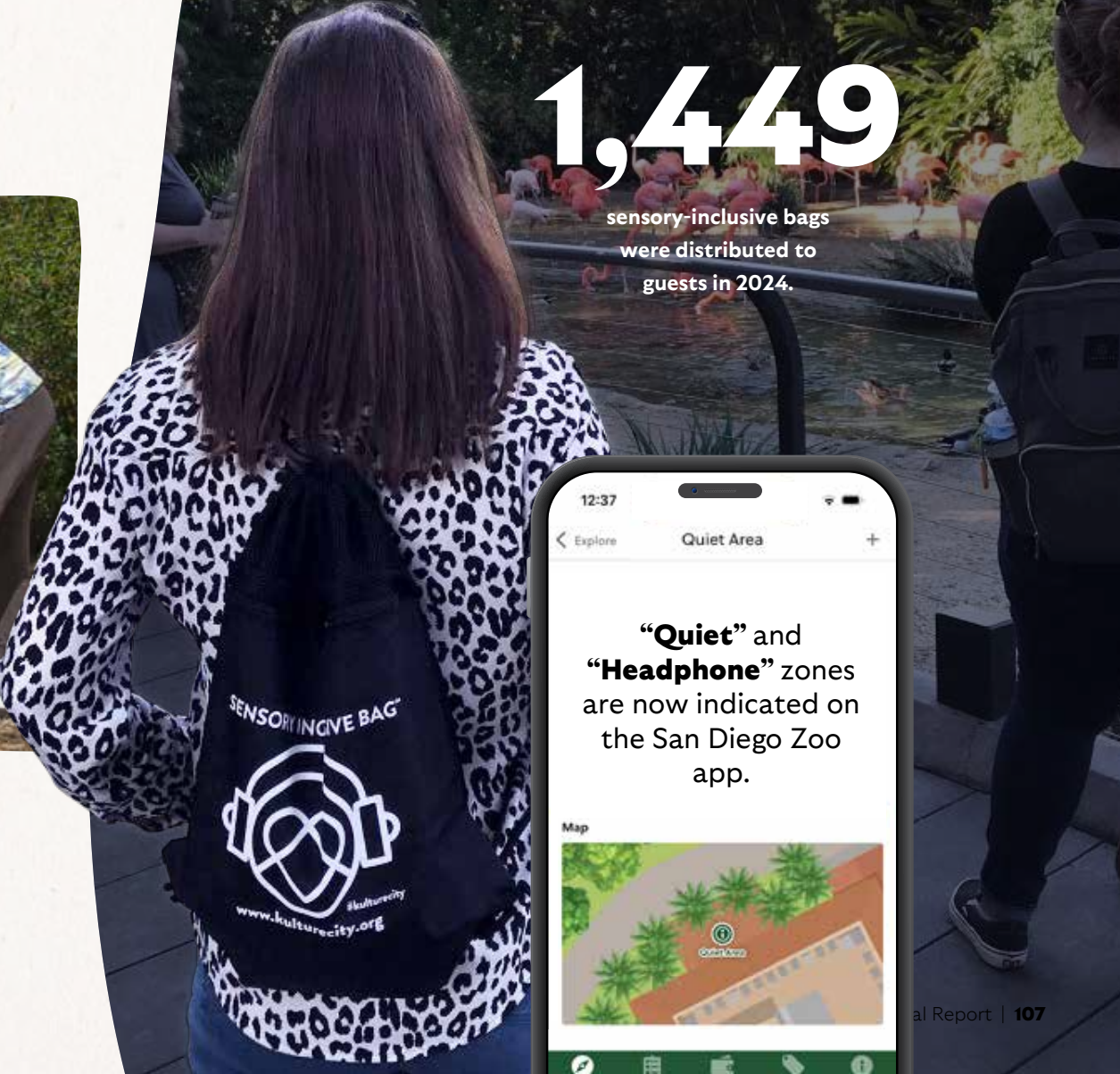
youths and young adults learned about career paths within our organization through our Plant-a-Seed program, which is run in collaboration with five other nonprofits: Youth Empowerment, Junior Achievement, Paving Great Futures, YMCA, and Outward Bound.

Reducing Sensory Overload

We’ve partnered with KultureCity to provide sensory inclusive offerings at our parks for all visitors, making our parks more accessible and enjoyable for everyone. Guests can reduce sensory overload by borrowing “sensory bags” that include noise-cancelling headphones and by using our accessibility maps and signage to find quiet areas.

1,449

sensory-inclusive bags were distributed to guests in 2024.



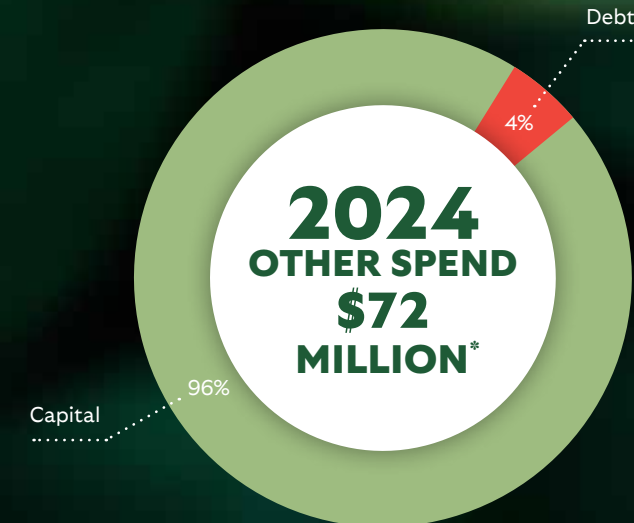
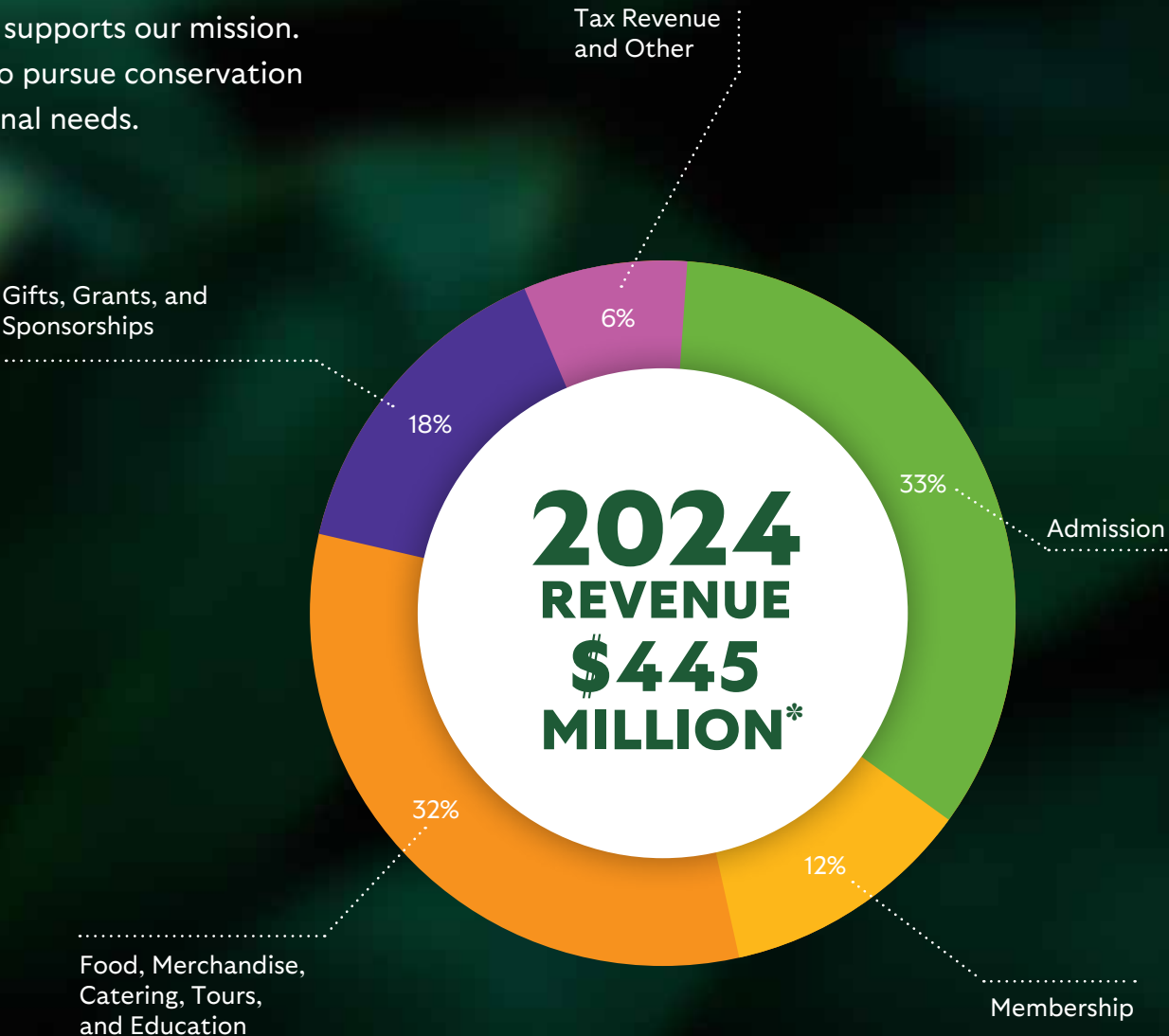
Financials

More Toward Our Mission

As a nonprofit organization, all revenue supports our mission. Revenue above expenses is reinvested to pursue conservation priorities, capital projects, and operational needs.



**Please note: These are unaudited numbers for 2024. Audited financials and IRS Form 990 will be available on sdzwa.org once they are completed.*



\$2.4 BILLION
Economic activity across the greater San Diego region each year that is driven by San Diego Zoo Wildlife Alliance, benefitting and supporting our greater community.

Ways to Support

Your generosity today makes all the difference.

We are all connected. Everything we do to save, protect, and care for wildlife in San Diego and in eight Conservation Hubs across the globe is only possible with the generosity of allies like you. Please join us in securing the future for wildlife, people, and the ecosystems we all share.

Here are some of the many ways to support us.

Membership

Beginning, renewing, or upgrading your membership—or joining one of our philanthropic groups of committed allies—are great ways to stay connected to the wildlife you love while furthering our mission and enjoying special benefits and programming.

Visit sdzwa.org/membership or see page 84 for details.



“Zoo membership is the greatest—I’m always in awe that I can have a blast with my family while actually making a difference for wildlife. We’ll be members for life!”

—IONA S.

Gifts that provide immediate support and may qualify as tax-deductible charitable donations:

- Cash
- Vehicle donations (car, truck, motorcycle, RV, or boat)
- Stocks and bonds
- Cryptocurrency
- Monthly giving

To learn more or become a Wildlife Hero, visit sdzwa.org/wildlife-hero.

Other Giving:

EMPLOYER MATCHING GIFTS

Many companies will match their employees’ (and often retirees’) contributions to our organization, doubling your impact for wildlife.

GIFTS TO FUND WILDLIFE HABITATS

Giving to a new or improved habitat at our parks helps ensure we can continue providing the world’s best care for wildlife.



To support our vital conservation mission, visit sdzwa.org/support-us, call us at (619) 685-3219, or email donations@sdzwa.org.

Special Events and Experiences

When you join us for a safari experience or tour and attend special events throughout the year—including our annual Food, Wine & Brew celebration and black-tie fundraising gala, Rendezvous In The Zoo (R·I·T·Z)—you’re in for an adventure that benefits wildlife.

Sponsorship and Licensing

From promotional opportunities to national cause marketing campaigns, we offer a wide array of services that can help your brand be part of our efforts to save wildlife.

CREATE A LEGACY FOR WILDLIFE

Your legacy gift helps us meet the challenges of today and tomorrow for generations to come. To learn more, visit zoolegacy.org.

BEQUESTS

Through your will or living trust, you can gift a specific amount, an asset, or a percentage of your estate. It’s one of the most flexible ways you can help save, protect, and care for wildlife.

MEMORIALS AND TRIBUTES

Donations can be a thoughtful way to honor or remember a loved one. All gifts have a meaningful impact and support our work to help wildlife around the world.

GIFTS OF PROPERTY AND RETAINED LIFE ESTATE

A gift of appreciated real estate property, such as a home, vacation residence, or commercial property, allows you to leave a lasting legacy while avoiding capital gains tax and receiving a charitable income tax deduction. You can even donate your home today while retaining the right to live there for the rest of your life.

CHARITABLE REMAINDER TRUST

With a charitable remainder trust, you can transfer cash or appreciated property and choose to receive a fixed annuity payment or variable payments based on the trust principal. When the trust matures, the remaining amount passes to us.

CHARITABLE GIFT ANNUITY (CGA)

Through a charitable gift annuity, you can transfer cash or appreciated property to our organization in exchange for fixed payments, with rates based on your age, for the rest of your life. When the annuity matures, the remainder passes to us.

BENEFICIARY DESIGNATION

For a simple and affordable way to support, you can designate us as a beneficiary of a retirement, investment, or bank account or your life insurance policy.

Leadership

2024 Executive Team

Paul A. Baribault
President and Chief Executive Officer

Shawn Dixon
Chief Operating Officer

David Franco
Chief Financial Officer

Erika Kohler
Senior Vice President and Executive Director,
San Diego Zoo

Lisa Peterson
Senior Vice President and Executive Director,
San Diego Zoo Safari Park

Nadine Lamberski
DVM, DACZM, DECZM (ZHM)
Chief Conservation and Wildlife Health Officer

David B. Gillig
Chief Philanthropy Officer

Aida Rosa
Chief Human Resources Officer

David Miller
Chief Marketing Officer

Wendy Bulger
General Counsel

2024 Board of Trustees

OFFICERS
Steven S. Simpson
Chair

Steven G. Tappan
Vice Chair

Rolf Benirschke
Vice Chair

Gary E. Knell
Treasurer

E. Jane Finley
Secretary

TRUSTEES
Kathleen Cain Carrithers
Javade Chaudhri
Adam Day
Clifford W. Hague
Bryan B. Min
Kenji Price
'Aulani Wilhelm

TRUSTEES EMERITI
Berit N. Durler
Thompson Fetter
Richard B. Gulley
Robert B. Horsman
John M. Thornton



Photo Credits: (Page 4) Rhino: Rio The Photographer; (Page 10) azamkassim/iStock/Getty Images Plus; (Page 14) Simoneemanphotography/iStock/Getty Images Plus; (Page 20) Porcupine: GlobalP/iStock/Getty Images Plus; (Page 28) Charles Ommalley, Office of the Governor; (Page 32) Hands: EmirMemedovski/iStock/Getty Images Plus; (Page 33) Environment: Mike_Pellini/iStock/Getty Images Plus; (Page 34) Sinhyu/iStock/Getty Images Plus; (Page 46) Jennifer Pribble: Photo Courtesy of Department of Land and Natural Resources; (Page 50) Workshop: Truong Van Nguyen/SDZWA; Forest, Leopard photos: Ministry of Environment and Forestry of Indonesia, SINTAS, SDZWA; (Page 51) BKSDA West Sumatra, SINTAS, SDZWA; (Page 56) Gorilla: LeeAnnWhite/iStock/Getty Images Plus; (Page 57) Dr. Abwe: Narrative Images; (Page 59) Michael Zeigler/iStock/Getty Images Plus; (Page 63) Sunflower Sea Star: naturediver/iStock/Getty Images Plus, Turtle: predrag1/iStock/Getty Images Plus; (Page 64) micsmt/iStock/Getty Images Plus; (Page 70) Sign: Rick Stevens; (Page 71) Rick Stevens; (Page 78) Landscape: Lewa Wildlife Conservancy/Jeff DeKock; (Page 82) Polar bear: Justinreznick/E+/Getty Images (Page 88) Narrative Images; (Page 89) Middle, Bottom: Rich Soublet Photography; (Page 92) Ambrose Letoluai; (Page 99) Chameleon: Sabrina Dao



**San Diego Zoo
Wildlife Alliance**

©2025 San Diego Zoo Wildlife Alliance. All rights reserved.